

Human SIRP Gamma/CD172g Protein

Cat. No. SRP-HM40G

Description

| | |
|-------------------------|--|
| Source | Recombinant Human SIRP Gamma/CD172g Protein is expressed from Expi293 with His tag and Avi tag at the C-terminal. It contains Glu29-Pro360. |
| Accession | Q9P1W8 |
| Molecular Weight | The protein has a predicted MW of 39.7 kDa. Due to glycosylation, the protein migrates to 45-52 kDa based on Tris-Bis PAGE result. |
| Endotoxin | Less than 1EU per µg by the LAL method. |
| Purity | > 95% as determined by Tris-Bis PAGE > 95% as determined by HPLC |

Formulation and Storage

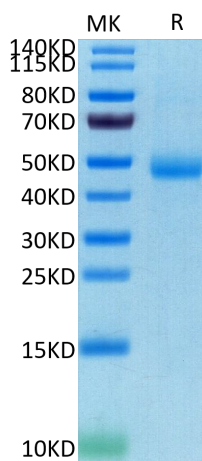
| | |
|-----------------------|--|
| Formulation | Lyophilized from 0.22µm filtered solution in PBS (pH 7.4). Normally 5% trehalose is added as protectant before lyophilization. |
| Reconstitution | Centrifuge tubes before opening. Reconstituting to a concentration more than 100 µg/ml is recommended (usually we use 1mg/ml solution for lyophilization). Dissolve the lyophilized protein in distilled water. |
| Storage | -20 to -80°C for 12 months as supplied from date of receipt. -20 to -80°C for 3-6 months in unopened state after reconstitution. 2-8°C for 2-7 days after reconstitution. Recommend to aliquot the protein into smaller quantities for optimal storage. Please avoid freeze-thaw cycles. |

Background

Signal regulatory protein gamma (SIRP gamma, designated CD172g), also called SIRP beta 2, is a monomeric 45-47 kDa type I transmembrane protein belonging to the SIRP/SHPS (CD172) family of the Ig superfamily. SIRP gamma is probable immunoglobulin-like cell surface receptor. On binding with CD47, mediates cell-cell adhesion. Engagement on T-cells by CD47 on antigen-presenting cells results in enhanced antigen-specific T-cell proliferation and costimulates T-cell activation.

Assay Data

Tris-Bis PAGE



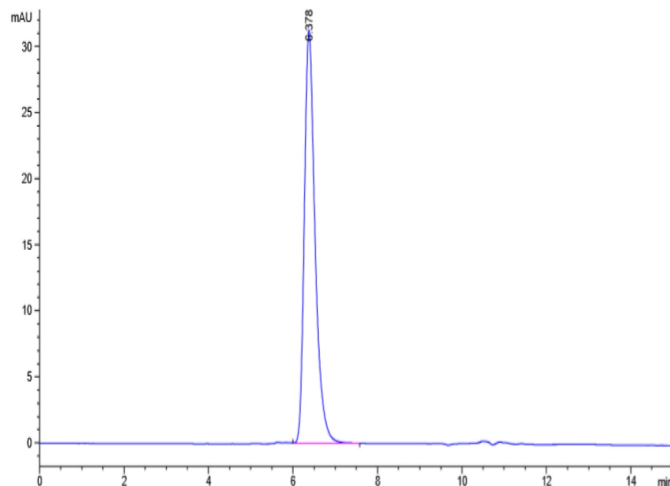
Human SIRP Gamma on Tris-Bis PAGE under reduced conditions. The purity is greater than 95%..

SEC-HPLC

Human SIRP Gamma/CD172g Protein

Cat. No. SRP-HM40G

Assay Data

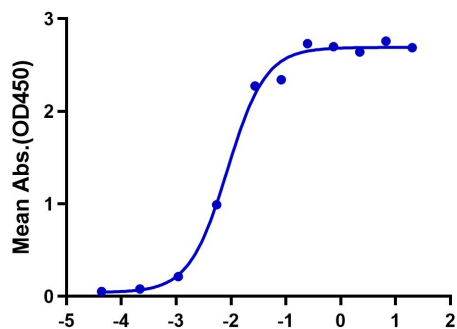


The purity of Human SIRP Gamma is greater than 95% as determined by SEC-HPLC.

ELISA Data

Human SIRP Gamma, His Tag ELISA

0.05µg Human SIRP Gamma, His Tag Per Well



Immobilized Human SIRP Gamma, His Tag at 0.5µg/ml (100µl/Well) on the plate. Dose response curve for Anti-SIRP alpha Antibody, hFc Tag with the EC50 of 8.6ng/ml determined by ELISA.