

Human STEAP1 Protein-VLP

Cat. No. STP-HM01V



Description

Source	Recombinant Human STEAP1 Protein-VLP is expressed from HEK293.
	It contains Met1-Leu339 (It may have cross reaction with anti-His antibody).
Accession	Q9UHE8
Molecular Weight	The protein has a predicted MW of 43.06 kDa.
Endotoxin	Less than 1 EU per µg by the LAL method.
Purity	> 95% as determined by HPLC

Formulation and Storage

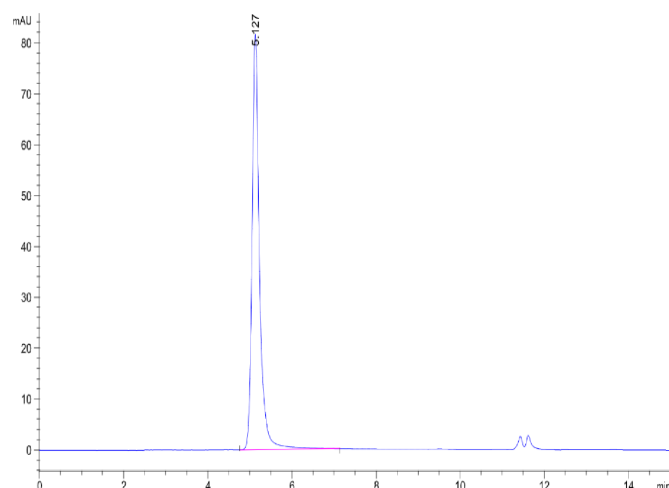
Formulation	Supplied as 0.22 µm filtered solution in PBS, 300mM L-Arginine (pH 7.4). Notice: If you need it for immunization, water-soluble adjuvant is recommended.
Storage	Valid for 12 months from date of receipt when stored at -80°C. Recommend to aliquot the protein into smaller quantities for optimal storage. Please minimize freeze-thaw cycles.

Background

Six transmembrane epithelial antigen of the prostate 1 (STEAP1) is a cell surface protein of the STEAP family whose main function focuses on intercellular communication and cell growth. STEAP1 is associated with tumor invasiveness and progression. It is considered a promising putative biomarker and a candidate target for prostate cancer treatment.

Assay Data

SEC-HPLC

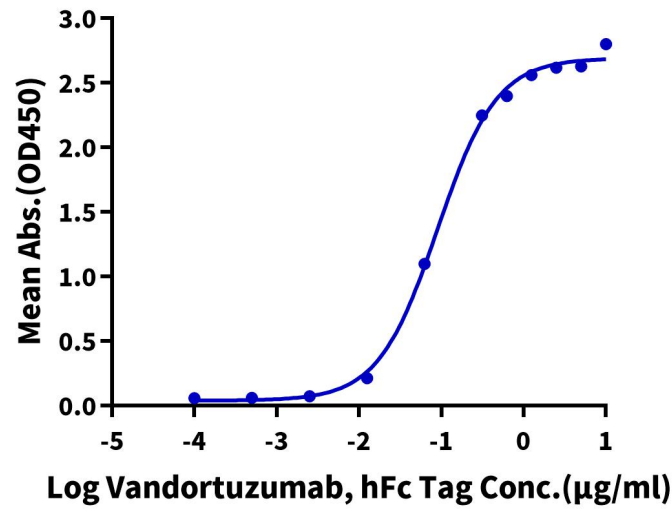


The purity of Human STEAP1 VLP is greater than 95% as determined by SEC-HPLC.

ELISA Data

Human STEAP1 VLP ELISA

0.5µg Human STEAP1 VLP Per Well



Immobilized Human STEAP1 VLP at 5 µg/ml (100µl/well) on the plate. Dose response curve for Vandortuzumab with the EC50 of 89.8ng/ml determined by ELISA.