

Human STEAP2 VLP

Cat. No. STP-HM02V

Description

Source	Recombinant Human STEAP2 VLP is expressed from HEK293. It contains Met1-Met490 (It may have cross reaction with anti-His antibody).
Accession	Q8NFT2-1
Molecular Weight	The target protein has a predicted MW of 66.72 kDa.
Endotoxin	Less than 1 EU per µg by the LAL method.
Purity	> 95% as determined by HPLC

Formulation and Storage

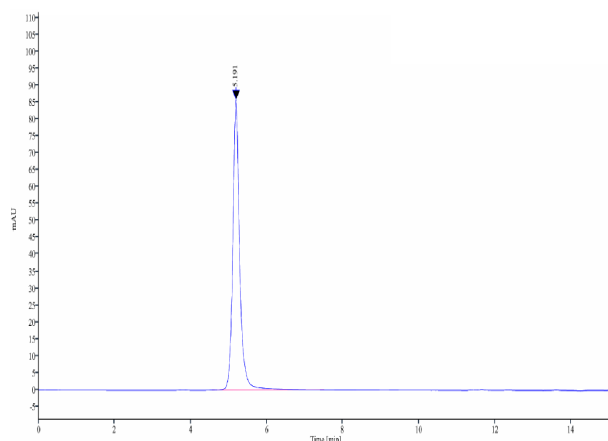
Formulation	Supplied as 0.22 µm filtered solution in PBS, 300mM L-arginine (pH 7.4). Notice: If you need it for immunization, water-soluble adjuvant is recommended.
Storage	Valid for 12 months from date of receipt when stored at -80°C. Recommend to aliquot the protein into smaller quantities for optimal storage. Please minimize freeze-thaw cycles.

Background

STEAP2, also known as the six transmembrane protein of prostate 1 (STAMP1), is located on chromosome 7q21.13, contains 6 exons and 5 introns, and encodes for a 490 aa long protein with an estimated molecular weight of 56.1 kDa. STEAP2 has been suggested to play a role in protein sorting and secretory pathways, as it shuttles to the Golgi organelle and trans-Golgi network. STEAP2 is significantly overexpressed in prostate cancer when compared to normal healthy tissue.

Assay Data

SEC-HPLC

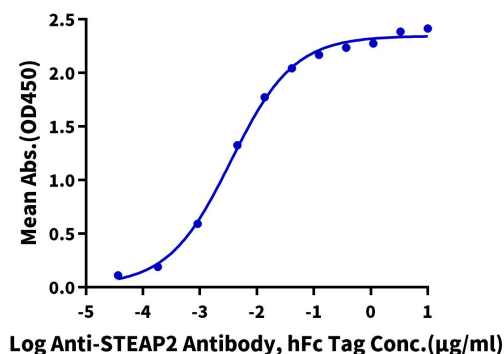


The purity of Human STEAP2 VLP is greater than 95% as determined by SEC-HPLC.

ELISA Data

Human STEAP2 VLP ELISA

0.5µg Human STEAP2 VLP Per Well



Immobilized Human STEAP2 VLP at 5 µg/ml (100µl/well) on the plate. Dose response curve for Anti-STEAP2 Antibody, hFc Tag with the EC50 of 3.5ng/ml determined by ELISA.