

# Human Syndecan-1 Protein

Cat. No. SYN-HM101



## Description

<b>Source</b>	Recombinant Human Syndecan-1 Protein is expressed from HEK293 with His tag at the C-Terminus. It contains Gln23-Gly254.
<b>Accession</b>	AAH08765
<b>Molecular Weight</b>	The protein has a predicted MW of 25 kDa. Due to glycosylation, the protein migrates to 50-80 kDa based on Bis-Tris PAGE result.
<b>Endotoxin</b>	Less than 1EU per $\mu\text{g}$ by the LAL method.
<b>Purity</b>	> 95% as determined by Bis-Tris PAGE

## Formulation and Storage

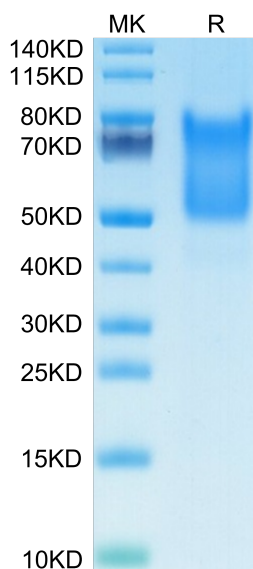
<b>Formulation</b>	Supplied as 0.22 $\mu\text{m}$ filtered solution in PBS (pH 7.4).
<b>Storage</b>	Valid for 12 months from date of receipt when stored at $-80^{\circ}\text{C}$ . Recommend to aliquot the protein into smaller quantities for optimal storage. Please minimize freeze-thaw cycles.

## Background

Liver diseases such as liver cirrhosis, primary and metastatic liver cancers are still a major medical challenge. Syndecan-1 is one of the most important proteoglycans in the liver. Syndecan-1 is normally expressed on the surfaces of hepatocytes and cholangiocytes. Due to liver diseases the amount of syndecan-1 increases in the liver.

## Assay Data

### Bis-Tris PAGE



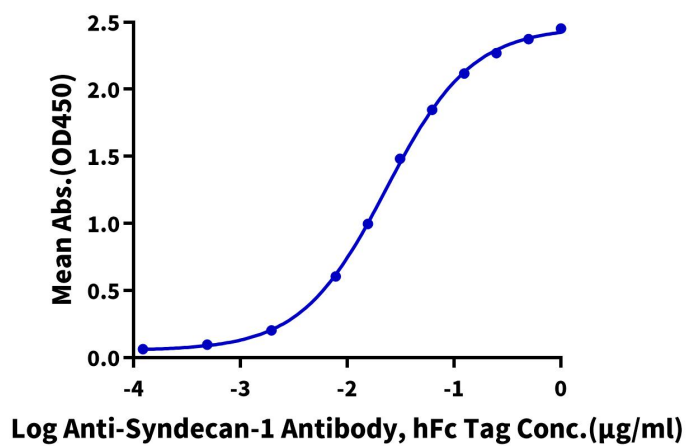
Human Syndecan-1 on Bis-Tris PAGE under reduced condition. The purity is greater than 95%.

### ELISA Data

Assay Data

**Human Syndecan-1, His Tag ELISA**

0.1µg Human Syndecan-1, His Tag Per Well



Immobilized Human Syndecan-1, His Tag at 1µg/ml (100µl/Well) on the plate. Dose response curve for Anti-Syndecan-1 Antibody, hFc Tag with the EC50 of 23.2ng/ml determined by ELISA.