

# Human Syndecan-1 Protein

Cat. No. SYN-HM101

## Description

<b>Source</b>	Recombinant Human Syndecan-1 Protein is expressed from HEK293 with His tag at the C-Terminus. It contains Gln23-Gly254.
<b>Accession</b>	AAH08765
<b>Molecular Weight</b>	The protein has a predicted MW of 25 kDa. Due to glycosylation, the protein migrates to 50-80 kDa based on Bis-Tris PAGE result.
<b>Endotoxin</b>	Less than 1EU per $\mu\text{g}$ by the LAL method.
<b>Purity</b>	> 95% as determined by Bis-Tris PAGE

## Formulation and Storage

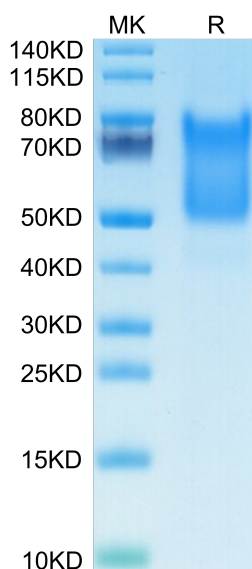
<b>Formulation</b>	Lyophilized from 0.22 $\mu\text{m}$ filtered solution in PBS (pH 7.4). Normally 8% trehalose is added as protectant before lyophilization.
<b>Reconstitution</b>	Centrifuge the tube before opening. Reconstituting to a concentration more than 100 $\mu\text{g}/\text{ml}$ is recommended. Dissolve the lyophilized protein in distilled water.
<b>Storage</b>	-20 to -80°C for 24 months as supplied from date of receipt. -80°C for 3-6 months after reconstitution. 2-8°C for 2-7 days after reconstitution. Recommend to aliquot the protein into smaller quantities for optimal storage. Please minimize freeze-thaw cycles.

## Background

Liver diseases such as liver cirrhosis, primary and metastatic liver cancers are still a major medical challenge. Syndecan-1 is one of the most important proteoglycans in the liver. Syndecan-1 is normally expressed on the surfaces of hepatocytes and cholangiocytes. Due to liver diseases the amount of syndecan-1 increases in the liver.

## Assay Data

### Bis-Tris PAGE



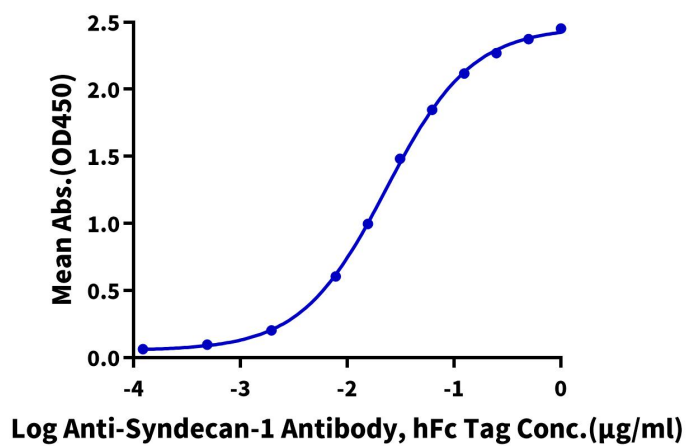
Human Syndecan-1 on Bis-Tris PAGE under reduced condition. The purity is greater than 95%.

### ELISA Data

Assay Data

**Human Syndecan-1, His Tag ELISA**

0.1µg Human Syndecan-1, His Tag Per Well



Immobilized Human Syndecan-1, His Tag at 1µg/ml (100µl/Well) on the plate. Dose response curve for Anti-Syndecan-1 Antibody, hFc Tag with the EC50 of 23.2ng/ml determined by ELISA.