

Biotinylated Human Syndecan-1 Protein, Ultra Low Endotoxin

Cat. No. SYN-HM401B-UL

Description

Source	Recombinant Biotinylated Human Syndecan-1 Protein is expressed from HEK293 with His tag and Avi tag at the C-Terminus. It contains Gln23-Gly254.
Accession	AAH08765
Molecular Weight	The protein has a predicted MW of 26.8 kDa. Due to glycosylation, the protein migrates to 50-70 kDa based on Bis-Tris PAGE result.
Endotoxin	Less than 0.01 EU per µg by the LAL method.
Purity	> 95% as determined by Bis-Tris PAGE

Formulation and Storage

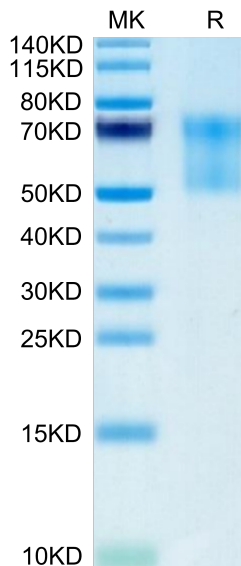
Formulation	Lyophilized from 0.22µm filtered solution in PBS (pH 7.4). Normally 8% trehalose is added as protectant before lyophilization.
Reconstitution	Dissolve the lyophilized protein in distilled water. Please refer to the Certificate of Analysis for detailed instructions.
Storage	-20 to -80°C for 24 months as supplied from date of receipt. -80°C for 3 months after reconstitution. Recommend to aliquot the protein into smaller quantities for optimal storage. Please minimize freeze-thaw cycles.

Background

Syndecan-1 (SDC-1) is a heparan sulfate (HS)/chondroitin sulfate proteoglycan (PG) of the cell surface and the extracellular matrix (ECM), which regulates a broad spectrum of physiological and pathological processes such as cell proliferation, migration, inflammation, matrix remodeling, wound healing, and tumorigenesis. Syndecan-1 represents the major PG of the liver, expressed by hepatocytes and cholangiocytes, and its elevated expression is a characteristic feature of liver diseases.

Assay Data

Bis-Tris PAGE



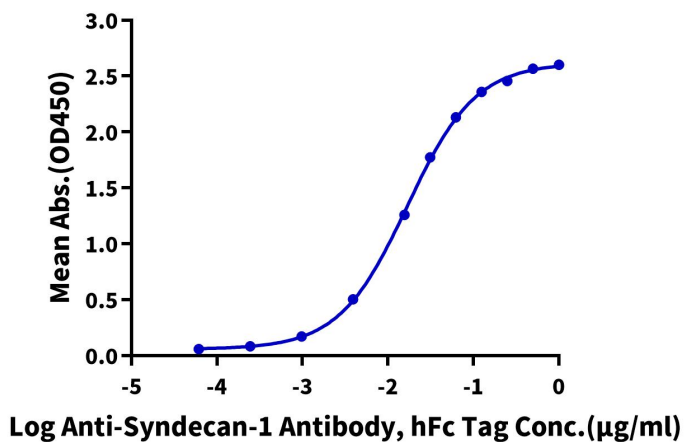
Biotinylated Human Syndecan-1 on Bis-Tris PAGE under reduced condition. The purity is greater than 95%.

ELISA Data

Assay Data

Biotinylated Human Syndecan-1, His Tag ELISA

0.2µg Biotinylated Human Syndecan-1, His Tag Per Well



Immobilized Biotinylated Human Syndecan-1, His Tag at 2µg/ml (100µl/well) on the streptavidin precoated plate (5µg/ml). Dose response curve for Anti-Syndecan-1 Antibody, hFc Tag with the EC50 of 16.9ng/ml determined by ELISA (QC Test).