

Biotinylated Human Syndecan-1 Protein

Cat. No. SYN-HM401B

Description

Source	Recombinant Biotinylated Human Syndecan-1 Protein is expressed from HEK293 with His tag and Avi tag at the C-Terminus. It contains Gln23-Gly254.
Accession	AAH08765
Molecular Weight	The protein has a predicted MW of 26.8 kDa. Due to glycosylation, the protein migrates to 50-70 kDa based on Bis-Tris PAGE result.
Endotoxin	Less than 1EU per µg by the LAL method.
Purity	> 95% as determined by Bis-Tris PAGE

Formulation and Storage

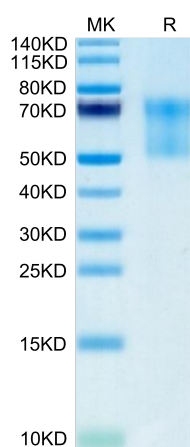
Formulation	Lyophilized from 0.22µm filtered solution in PBS (pH 7.4). Normally 8% trehalose is added as protectant before lyophilization.
Reconstitution	Centrifuge the tube before opening. Reconstituting to a concentration more than 100 µg/ml is recommended. Dissolve the lyophilized protein in distilled water.
Storage	-20 to -80°C for 24 months as supplied from date of receipt. -80°C for 3 months after reconstitution. Recommend to aliquot the protein into smaller quantities for optimal storage. Please minimize freeze-thaw cycles.

Background

Liver diseases such as liver cirrhosis, primary and metastatic liver cancers are still a major medical challenge. Syndecan-1 is one of the most important proteoglycans in the liver. Syndecan-1 is normally expressed on the surfaces of hepatocytes and cholangiocytes. Due to liver diseases the amount of syndecan-1 increases in the liver.

Assay Data

Bis-Tris PAGE

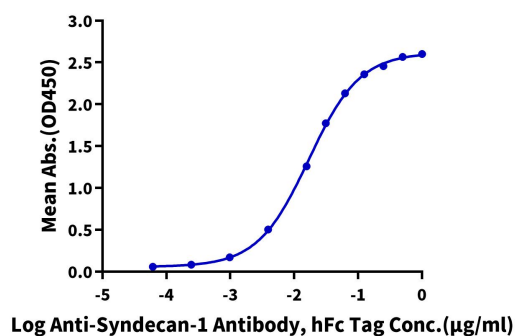


Biotinylated Human Syndecan-1 on Bis-Tris PAGE under reduced condition. The purity is greater than 95%.

ELISA Data

Biotinylated Human Syndecan-1, His Tag ELISA

0.2µg Biotinylated Human Syndecan-1, His Tag Per Well



Immobilized Biotinylated Human Syndecan-1, His Tag at 2µg/ml (100µl/well) on the streptavidin precoated plate (5µg/ml). Dose response curve for Anti-Syndecan-1 Antibody, hFc Tag with the EC50 of 16.9ng/ml determined by ELISA (QC Test).