

Rabbit Syndecan-1 Protein

Cat. No. SYN-RM101



Description

Source	Recombinant Rabbit Syndecan-1 Protein is expressed from HEK293 with His tag at the C-Terminus. It contains Leu23-Gly254.
Accession	XP_008252990.1
Molecular Weight	The protein has a predicted MW of 24.57 kDa. Due to glycosylation, the protein migrates to 45-60 kDa based on Bis-Tris PAGE result.
Endotoxin	Less than 1EU per μg by the LAL method.
Purity	> 90% as determined by Bis-Tris PAGE > 90% as determined by HPLC

Formulation and Storage

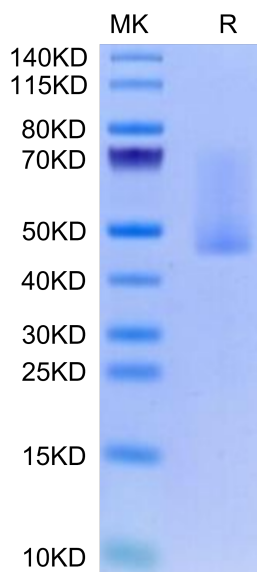
Formulation	Supplied as 0.22 μm filtered solution in PBS (pH 7.4).
Storage	Valid for 12 months from date of receipt when stored at -80°C. Recommend to aliquot the protein into smaller quantities for optimal storage. Please minimize freeze-thaw cycles.

Background

CD138 (syndecan-1, Sdc-1) is a member of the syndecan family that comprises heparan sulfate proteoglycans. CD138 is significant for cell-cell and cell-matrix interactions. CD138 plays a crucial role in carcinogenesis and is an attractive target for anticancer treatment with heparanase inhibitors and anti-CD138 antibodies for immunotherapy.

Assay Data

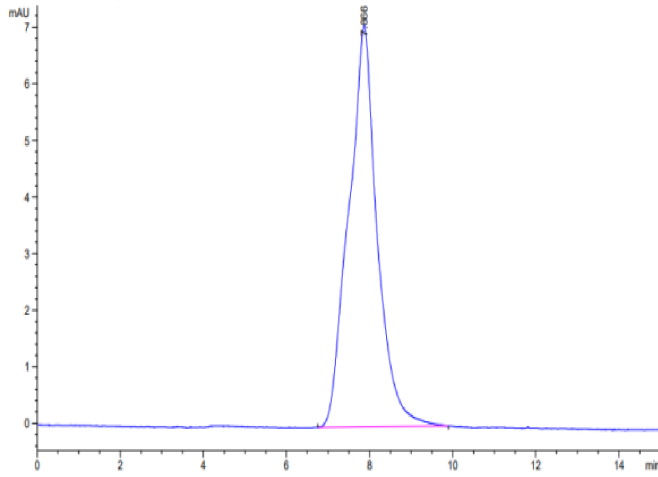
Bis-Tris PAGE



Rabbit Syndecan-1 on Bis-Tris PAGE under reduced condition. The purity is greater than 90%.

SEC-HPLC

Assay Data



The purity of Rabbit Syndecan-1 is greater than 90% as determined by SEC-HPLC.