

Rabbit Syndecan-1 Protein

Cat. No. SYN-RM101



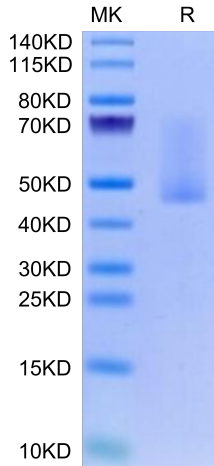
Description	
Source	Recombinant Rabbit Syndecan-1 Protein is expressed from HEK293 with His tag at the C-Terminus. It contains Leu23-Gly254.
Accession	XP_008252990.1
Molecular Weight	The protein has a predicted MW of 24.57 kDa. Due to glycosylation, the protein migrates to 45-60 kDa based on Tris-Bis PAGE result.
Endotoxin	Less than 1EU per µg by the LAL method.
Purity	> 90% as determined by Tris-Bis PAGE > 90% as determined by HPLC

Formulation and Storage	
Formulation	Lyophilized from 0.22µm filtered solution in PBS (pH 7.4). Normally 8% trehalose is added as protectant before lyophilization.
Reconstitution	Centrifuge the tube before opening. Reconstituting to a concentration more than 100 µg/ml is recommended. Dissolve the lyophilized protein in distilled water.
Storage	-20 to -80°C for 12 months as supplied from date of receipt. -20 to -80°C for 3-6 months in unopened state after reconstitution. 2-8°C for 2-7 days after reconstitution. Recommend to aliquot the protein into smaller quantities for optimal storage. Please minimize freeze-thaw cycles.

Background	
CD138 (syndecan-1, Sdc-1) is a member of the syndecan family that comprises heparan sulfate proteoglycans. CD138 is significant for cell-cell and cell-matrix interactions. CD138 plays a crucial role in carcinogenesis and is an attractive target for anticancer treatment with heparanase inhibitors and anti-CD138 antibodies for immunotherapy.	

Assay Data

Tris-Bis PAGE



Rabbit Syndecan-1 on Tris-Bis PAGE under reduced condition. The purity is greater than 90%.

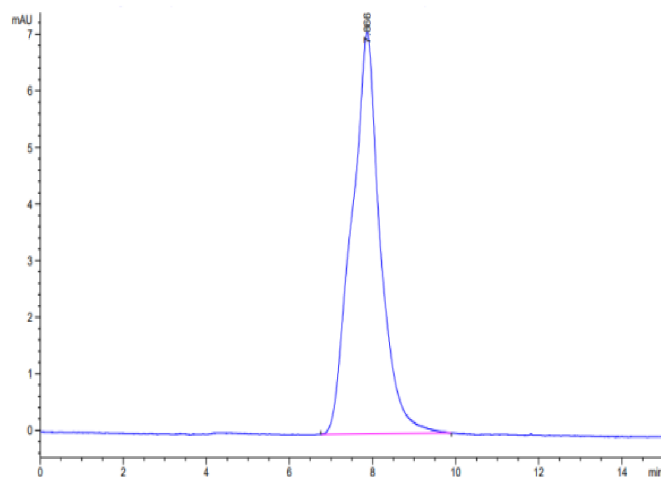
SEC-HPLC

Rabbit Syndecan-1 Protein

Cat. No. SYN-RM101

KACATUS

Assay Data



The purity of Rabbit Syndecan-1 is greater than 90% as determined by SEC-HPLC.