

# Human Tau-441/2N4R Protein

Cat. No. TAU-HE041



## Description

<b>Source</b>	Recombinant Human Tau-441/2N4R Protein is expressed from E.coli without tag. It contains Met1-Leu441.
<b>Accession</b>	P10636-8
<b>Molecular Weight</b>	The protein has a predicted MW of 45.84 kDa. The protein migrates to 60-70 kDa based on Bis-Tris PAGE result.
<b>Endotoxin</b>	Less than 0.1 EU per µg by the LAL method.
<b>Purity</b>	> 95% as determined by Bis-Tris PAGE > 95% as determined by HPLC

## Formulation and Storage

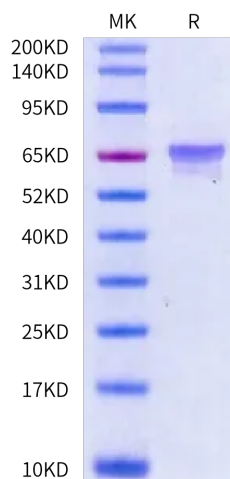
<b>Formulation</b>	Supplied as 0.22 µm filtered solution in 25mM HEPES, 0.25M NaCl, 10% Glycerol, 1mM TCEP (pH 7.2).
<b>Storage</b>	Valid for 12 months from date of receipt when stored at -80°C. Recommend to aliquot the protein into smaller quantities for optimal storage. Please minimize freeze-thaw cycles.

## Background

As a major microtubule-associated protein, tau plays an important role in promoting microtubule assembly and stabilizing microtubules. In Alzheimer's disease (AD) and other tauopathies, the abnormally hyperphosphorylated tau proteins are aggregated into paired helical filaments and accumulated in the neurons with the form of neurofibrillary tangles. An imbalanced regulation in protein kinases and protein phosphatases is the direct cause of tau hyperphosphorylation.

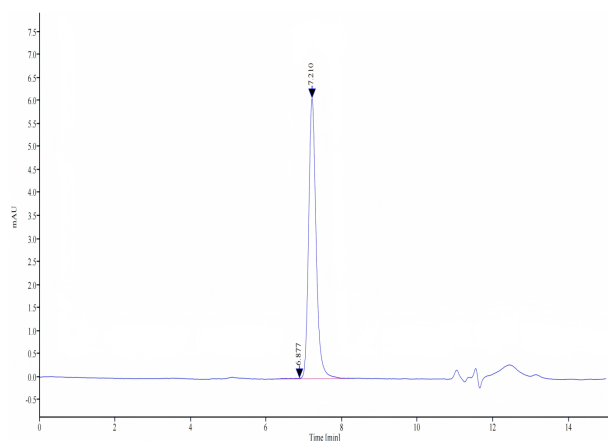
## Assay Data

### Bis-Tris PAGE



Human Tau-441 on Bis-Tris PAGE under reduced condition. The purity is greater than 95%.

### SEC-HPLC



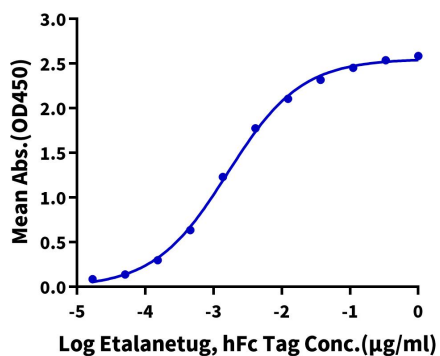
The purity of Human Tau-441 is greater than 95% as determined by SEC-HPLC.

Assay Data

ELISA Data

**Human Tau-441, No Tag ELISA**

0.05µg Human Tau-441, No Tag Per Well



Immobilized Human Tau-441, No Tag at 0.5µg/ml (100µl/well) on the plate. Dose response curve for Etalaneug, hFc Tag with the EC50 of 1.6ng/ml determined by ELISA.