

Human NY-ESO-1 TCR&CD3 Complex VLP

Cat. No. TCC-HM00V

Description

Source	Recombinant Human NY-ESO-1 TCR&CD3 Complex VLP is expressed from HEK293. It contains NY-ESO-1 specific TCR (1G4c113), CD3ε&CD3γ, CD3ε&CD3δ, and CD3ζ dimers.
Endotoxin	Less than 1 EU per μg by the LAL method.
Purity	> 95% as determined by HPLC

Formulation and Storage

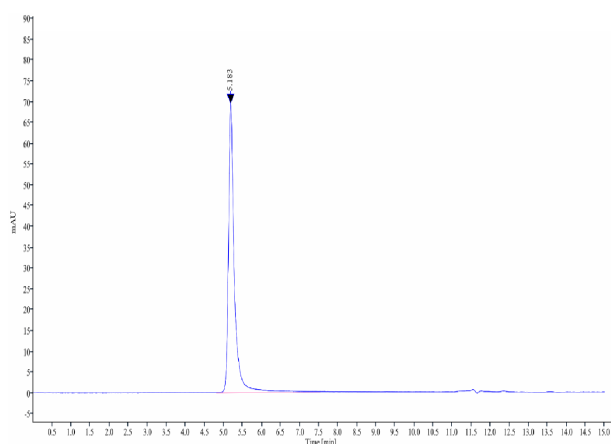
Formulation	Supplied as 0.22 μm filtered solution in PBS, 300mM L-arginine (pH 7.4). Notice: If you need it for immunization, water-soluble adjuvant is recommended.
Storage	Valid for 12 months from date of receipt when stored at -80°C. Recommend to aliquot the protein into smaller quantities for optimal storage. Please minimize freeze-thaw cycles.

Background

The 1G4c113 TCR is an engineered, affinity-matured variant of the 1G4 T-cell receptor that specifically recognizes the peptide fragment of NY-ESO-1 (SLLMWITQC) presented on the HLA-A*02:01. Cluster of Differentiation 3 (CD3) is a multimeric protein complex and T cell co-receptor that plays an essential role in adaptive immune responses. These CD3 dimers bind non-covalently to the TCR to form the TCR&CD3 complex on the cell surface.

Assay Data

SEC-HPLC

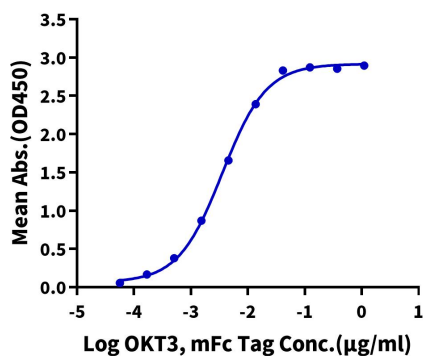


The purity of Human NY-ESO-1 TCR&CD3 Complex VLP is greater than 95% as determined by SEC-HPLC.

ELISA Data

Human NY-ESO-1 TCR&CD3 Complex VLP ELISA

0.5 μg Human NY-ESO-1 TCR&CD3 Complex VLP Per Well



Immobilized Human NY-ESO-1 TCR&CD3 Complex VLP at 5 μg/mL (100 μl/well) on the plate. Dose response curve for OKT3, mFc Tag with the EC50 of 3.6 ng/ml determined by ELISA.

Human NY-ESO-1 TCR&CD3 Complex VLP

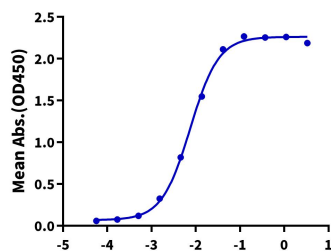
Cat. No. TCC-HM00V

Assay Data

ELISA Data

Human NY-ESO-1 TCR&CD3 Complex VLP ELISA

0.5µg Human NY-ESO-1 TCR&CD3 Complex VLP Per Well



Immobilized Human NY-ESO-1 TCR&CD3 Complex VLP at 5 µg/mL (100µl/well) on the plate. Dose response curve for Human HLA-A*02:01&B2M&NY-ESO-1 (SLLMWITQC) Monomer, His Tag (Cat. MHC-HM405) with the EC50 of 7.5ng/ml determined by ELISA.

Log Human HLA-A*02:01&B2M&NY-ESO-1 (SLLMWITQC) Monomer, His Tag Conc. (µg/ml)