

Mouse Coagulation factor III/Tissue Factor Protein, Ultra Low Endotoxin



Cat. No. TFR-MM103-UL

Description	
Source	Recombinant Mouse Coagulation factor III/Tissue Factor Protein is expressed from HEK293 with His tag at the C-terminus. It contains Ala29-Glu251.
Accession	P20352
Molecular Weight	The protein has a predicted MW of 27 kDa. Due to glycosylation, the protein migrates to 42-55 kDa based on Bis-Tris PAGE result.
Endotoxin	Less than 0.01 EU per µg by the LAL method.
Purity	> 95% as determined by Bis-Tris PAGE > 95% as determined by HPLC

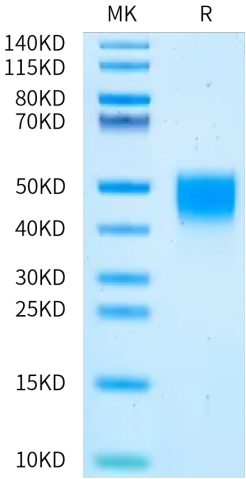
Formulation and Storage	
Formulation	Lyophilized from 0.22 µm filtered solution in 50mM Tris, 150mM NaCl (pH 7.5). Normally 8% trehalose is added as protectant before lyophilization.
Reconstitution	Dissolve the lyophilized protein in distilled water. Please refer to the Certificate of Analysis for detailed instructions.
Storage	-20 to -80°C for 12 months as supplied from date of receipt. -80°C for 3 months after reconstitution. Recommend to aliquot the protein into smaller quantities for optimal storage. Please minimize freeze-thaw cycles.

**Background**

Tissue factor (also named Coagulation Factor III) is a cell surface glycoprotein responsible for initiating the extrinsic pathway of coagulation. Tissue factor is the primary cellular initiator of blood coagulation via interaction with coagulation factor VII. Aberrant expression of tissue factor is responsible for thrombosis during septic shock, atherosclerosis and cancer.

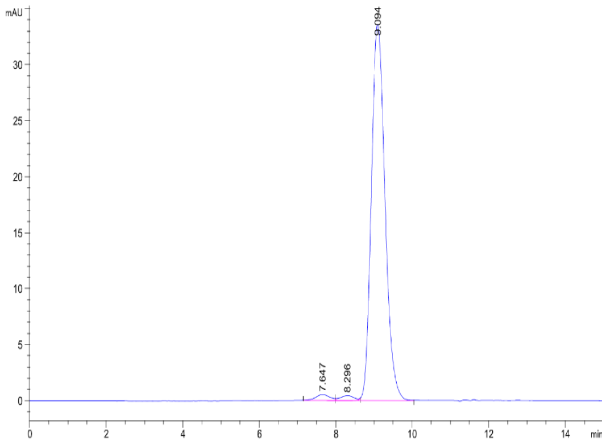
**Assay Data**

**Bis-Tris PAGE**



Mouse Coagulation factor III on Bis-Tris PAGE under reduced condition. The purity is greater than 95%.

**SEC-HPLC**



The purity of Mouse Coagulation factor III is greater than 95% as determined by SEC-HPLC.

# Mouse Coagulation factor III/Tissue Factor Protein, Ultra Low Endotoxin

Cat. No. TFR-MM103-UL



## Assay Data

### BLI Data

Measured by its ability to activate Coagulation Factor VII in cleaving a fluorogenic peptide substrate Boc-VPR-AMC. The AC50 is <5 µg/mL.