

Canine TK1 Protein

Cat. No. TK1-DE101

Description

Source	Recombinant Canine TK1 Protein is expressed from E.coli with His tag at the C-Terminus. It contains Ser2-Asn242.
Accession	E2QXP4
Molecular Weight	The protein has a predicted MW of 27.41 kDa. The protein migrates to 25-28 kDa based on Bis-Tris PAGE result.
Endotoxin	Less than 1EU per µg by the LAL method.
Purity	> 95% as determined by Bis-Tris PAGE

Formulation and Storage

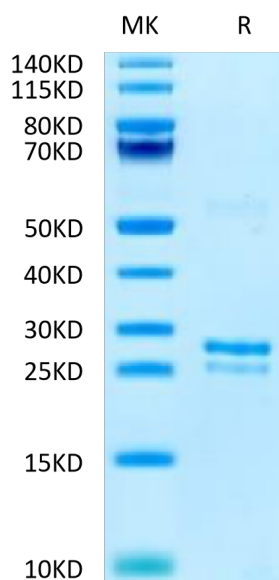
Formulation	Supplied as 0.22µm filtered solution in 20mM PB, 500mM NaCl, 200mM L-arginine (pH 7.4).
Storage	Valid for 12 months from date of receipt when stored at -80°C. Recommend to aliquot the protein into smaller quantities for optimal storage. Please minimize freeze-thaw cycles.

Background

Thymidine kinase 1 (TK1) catalyzes the initial phosphorylation of thymidine in the salvage pathway synthesis of dTTP, an essential building block of DNA. TK1 is a cytosolic enzyme with its highest level during the S-phase of the cell cycle.

Assay Data

Bis-Tris PAGE



Canine TK1 on Bis-Tris PAGE under reduced condition. The purity is greater than 95%.