

# Cynomolgus TRAIL R2/DR5/TNFRSF10B Protein

Cat. No. TRL-CM1R2

## Description

<b>Source</b>	Recombinant Cynomolgus TRAIL R2/DR5/TNFRSF10B Protein is expressed from HEK293 with His tag at the C-Terminus. It contains Ile58-Ser212.
<b>Accession</b>	A0A2K5TXK0
<b>Molecular Weight</b>	The protein has a predicted MW of 18.28 kDa. Due to glycosylation, the protein migrates to 25-35 kDa based on Bis-Tris PAGE result.
<b>Endotoxin</b>	Less than 1EU per µg by the LAL method.
<b>Purity</b>	> 95% as determined by Bis-Tris PAGE > 95% as determined by HPLC

## Formulation and Storage

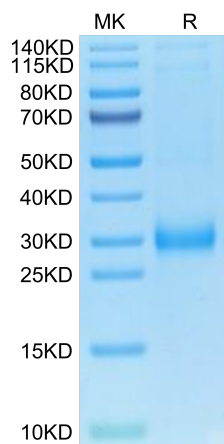
<b>Formulation</b>	Lyophilized from 0.22µm filtered solution in PBS (pH 7.4). Normally 8% trehalose is added as protectant before lyophilization.
<b>Reconstitution</b>	Centrifuge the tube before opening. Reconstituting to a concentration more than 100 µg/ml is recommended. Dissolve the lyophilized protein in distilled water.
<b>Storage</b>	-20 to -80°C for 12 months as supplied from date of receipt. -80°C for 3 months after reconstitution. Recommend to aliquot the protein into smaller quantities for optimal storage. Please minimize freeze-thaw cycles.

## Background

DR5, also called TRAIL R2, TRICK 2, TNFRSF10B, and MK is a type 1 TNF R superfamily, membrane protein which is a receptor for TRAIL (APO2 ligand). DR5 is a receptor for the cytotoxic ligand TNFSF10/TRAIL. The resulting death-inducing signaling complex (DISC) performs caspase-8 proteolytic activation which initiates the subsequent cascade of caspases (aspartate-specific cysteine proteases) mediating apoptosis.

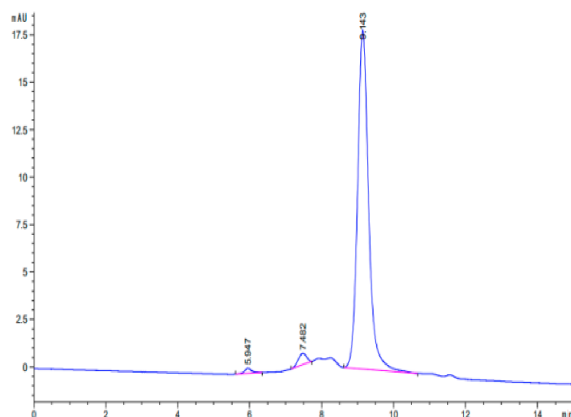
## Assay Data

### Bis-Tris PAGE



Cynomolgus TRAIL R2 on Bis-Tris PAGE under reduced condition. The purity is greater than 95%.

### SEC-HPLC



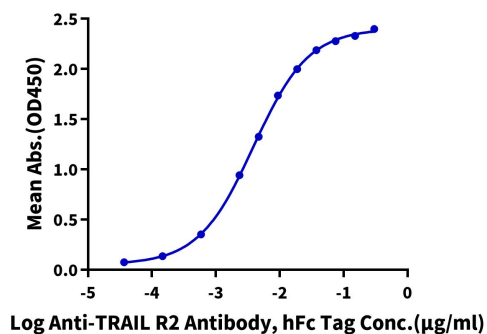
The purity of Cynomolgus TRAIL R2 is greater than 95% as determined by SEC-HPLC.

Assay Data

ELISA Data

**Cynomolgus TRAIL R2, His Tag ELISA**

0.1µg Cynomolgus TRAIL R2, His Tag Per Well



Immobilized Cynomolgus TRAIL R2, His Tag at 1µg/ml (100µl/well) on the plate. Dose response curve for Anti-TRAIL R2 Antibody, hFc Tag with the EC50 of 3.9ng/ml determined by ELISA.