

# Cynomolgus TREM1 Protein

Cat. No. TRM-CM101



## Description

<b>Source</b>	Recombinant Cynomolgus TREM1 Protein is expressed from HEK293 with His tag at the C-Terminus. It contains Thr21-Pro201.
<b>Accession</b>	XP_005553111.1
<b>Molecular Weight</b>	The protein has a predicted MW of 23.76 kDa. Due to glycosylation, the protein migrates to 45-60 kDa based on Tris-Bis PAGE result.
<b>Endotoxin</b>	Less than 1EU per µg by the LAL method.
<b>Purity</b>	> 95% as determined by Tris-Bis PAGE > 95% as determined by HPLC

## Formulation and Storage

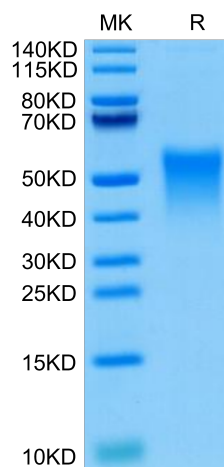
<b>Formulation</b>	Lyophilized from 0.22µm filtered solution in PBS (pH 7.4). Normally 8% trehalose is added as protectant before lyophilization.
<b>Reconstitution</b>	Centrifuge the tube before opening. Reconstituting to a concentration more than 100 µg/ml is recommended. Dissolve the lyophilized protein in distilled water.
<b>Storage</b>	-20 to -80°C for 12 months as supplied from date of receipt. -20 to -80°C for 3-6 months in unopened state after reconstitution. 2-8°C for 2-7 days after reconstitution. Recommend to aliquot the protein into smaller quantities for optimal storage. Please minimize freeze-thaw cycles.

## Background

TREM1 (Triggering Receptor Expressed on Myeloid Cells 1) is a pro-inflammatory receptor expressed by phagocytes, which can also be released as a soluble molecule (sTREM1). The roles of TREM1 and sTREM1 in liver infection and inflammation are not clear.

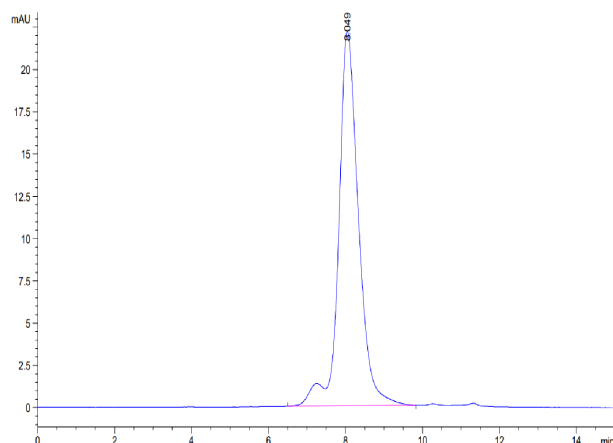
## Assay Data

### Tris-Bis PAGE



Cynomolgus TREM1 on Tris-Bis PAGE under reduced condition. The purity is greater than 95%.

### SEC-HPLC



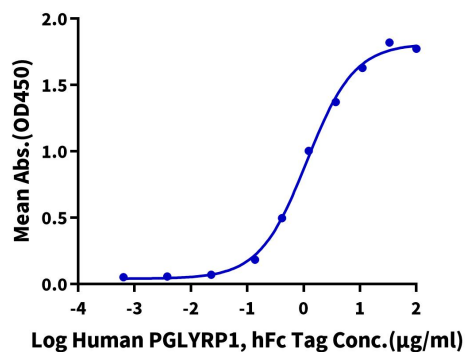
The purity of Cynomolgus TREM1 is greater than 95% as determined by SEC-HPLC.

Assay Data

ELISA Data

**Cynomolgus TREM1, His Tag ELISA**

0.5µg Cynomolgus TREM1, His Tag Per Well



Immobilized Cynomolgus TREM1, His Tag at 5µg/ml (100µl/well) on the plate. Dose response curve for Human PGLYRP1, hFc Tag with the EC50 of 1.14µg/ml determined by ELISA.