

Human TREM1 Protein

Cat. No. TRM-HM101

Description

Source	Recombinant Human TREM1 Protein is expressed from HEK293 with His tag at the C-Terminus. It contains Ala21-Arg200.
Accession	NP_061113.1
Molecular Weight	The protein has a predicted MW of 21.4 kDa. Due to glycosylation, the protein migrates to 30-50 kDa based on Bis-Tris PAGE result.
Endotoxin	Less than 1 EU per μg by the LAL method.
Purity	> 95% as determined by Bis-Tris PAGE > 95% as determined by HPLC

Formulation and Storage

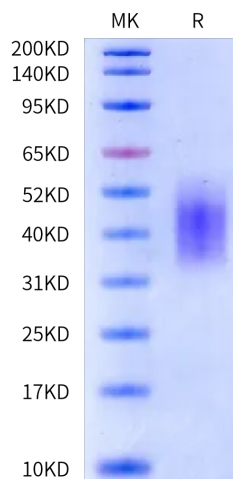
Formulation	Supplied as 0.22 μm filtered solution in PBS (pH 7.4).
Storage	Valid for 12 months from date of receipt when stored at -80°C . Recommend to aliquot the protein into smaller quantities for optimal storage. Please minimize freeze-thaw cycles.

Background

TREM1 (Triggering Receptor Expressed on Myeloid Cells 1) is a pro-inflammatory receptor expressed by phagocytes, which can also be released as a soluble molecule (sTREM1). The roles of TREM1 and sTREM1 in liver infection and inflammation are not clear.

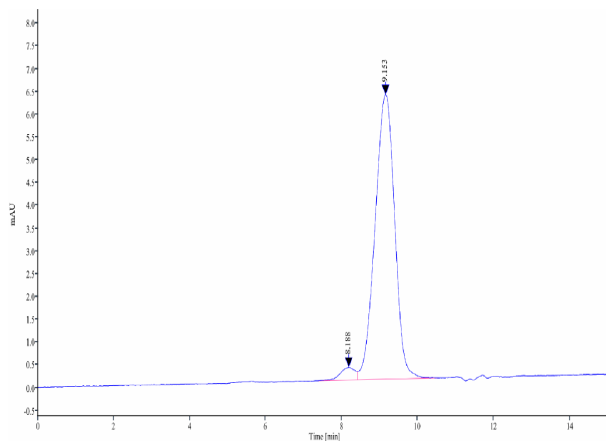
Assay Data

Bis-Tris PAGE



Human TREM1 on Bis-Tris PAGE under reduced condition. The purity is greater than 95%.

SEC-HPLC



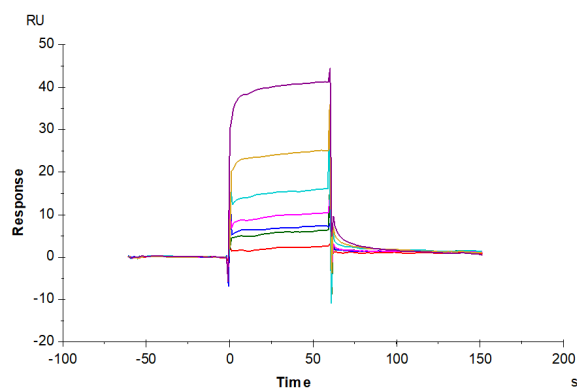
The purity of Human TREM1 is greater than 95% as determined by SEC-HPLC.

Human TREM1 Protein

Cat. No. TRM-HM101

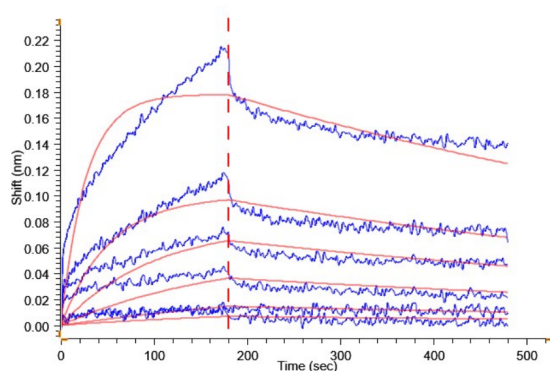
Assay Data

SPR Data



Human PGLYRP1, hFc Tag (Cat. PGL-HM201) captured on CM5 Chip via Protein A can bind Human TREM1, His Tag with an affinity constant of 17.39 μ M as determined in SPR assay (Biacore T200).

BLI Data



Loaded Human TREM1, His Tag on Anti-His-Biosensor can bind Human PGLYRP1, hFc Tag (Cat. PGL-HM201) with an affinity constant of 32.90 nM as determined in BLI assay.