

Human TREM1 (21-136) Protein

Cat. No. TRM-HM10D

Description

Source	Recombinant Human TREM1 (21-136) Protein is expressed from HEK293 with His tag at the C-terminus. It contains Ala21-Gly136 (C69S).
Accession	NP_061113.1
Molecular Weight	The protein has a predicted MW of 15.04 kDa. Due to glycosylation, the protein migrates to 16-20 kDa based on Bis-Tris PAGE result.
Endotoxin	Less than 0.1 EU per µg by the LAL method.
Purity	> 95% as determined by Bis-Tris PAGE > 95% as determined by HPLC

Formulation and Storage

Formulation	Lyophilized from 0.22 µm filtered solution in PBS (pH 7.4). Normally 8% trehalose is added as protectant before lyophilization.
Reconstitution	Dissolve the lyophilized protein in distilled water. Please refer to the Certificate of Analysis for detailed instructions.
Storage	-20 to -80°C for 12 months as supplied from date of receipt. -80°C for 3 months after reconstitution. Recommend to aliquot the protein into smaller quantities for optimal storage. Please minimize freeze-thaw cycles.

Background

TREM1 (Triggering Receptor Expressed on Myeloid Cells 1) is a pro-inflammatory receptor expressed by phagocytes, which can also be released as a soluble molecule (sTREM1). The roles of TREM1 and sTREM1 in liver infection and inflammation are not clear.

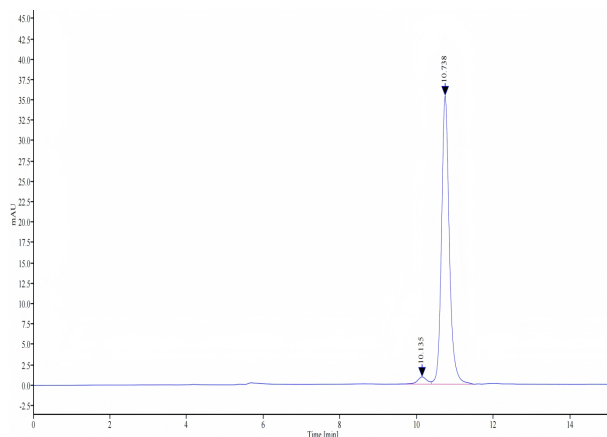
Assay Data

Bis-Tris PAGE



Human TREM1 (21-136) on Bis-Tris PAGE under reduced condition. The purity is greater than 95%.

SEC-HPLC



The purity of Human TREM1 (21-136) is greater than 95% as determined by SEC-HPLC.

Human TREM1 (21-136) Protein

Cat. No. TRM-HM10D

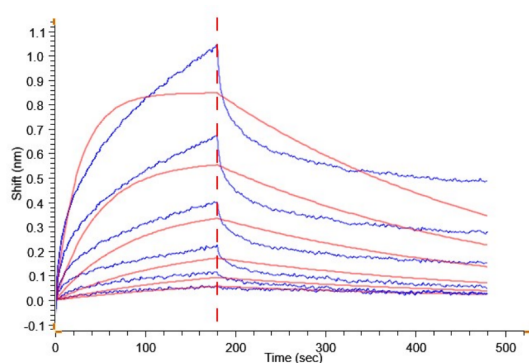
Assay Data

SPR Data



Human PGLYRP1, hFc Tag (Cat. PGL-HM201) captured on CM5 Chip via Protein A can bind Human TREM1 (21-136), His Tag with an affinity constant of 0.96 μ M as determined in SPR assay (Biacore T200).

BLI Data



Loaded Human TREM1 (21-136), His Tag on Anti-His-Biosensor can bind Human PGLYRP1, hFc Tag (Cat. PGL-HM201) with an affinity constant of 42.00 nM as determined in BLI assay