

# Cynomolgus TSLP Protein, Ultra Low Endotoxin

Cat. No. TSP-CM101-UL

Description	
Source	Recombinant Cynomolgus TSLP Protein is expressed from HEK293 with His tag at the C-Terminus. It contains Tyr29-Gln159.
Accession	A0A7N9CAT7
Molecular Weight	The protein has a predicted MW of 16.3 kDa. Due to furin cleavage site, the protein migrates to 12 kDa&23-30 kDa based on Bis-Tris PAGE result.
Endotoxin	Less than 0.01 EU per µg by the LAL method.
Purity	> 95% as determined by Bis-Tris PAGE > 90% as determined by HPLC

## Formulation and Storage

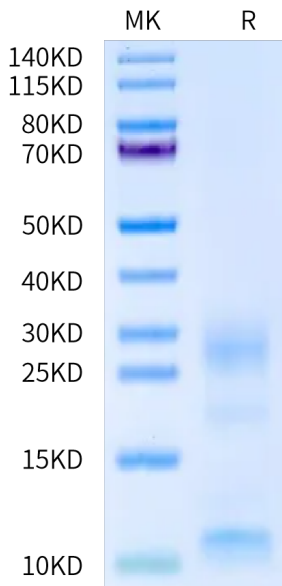
Formulation	Lyophilized from 0.22µm filtered solution in PBS (pH 7.4). Normally 8% trehalose is added as protectant before lyophilization.
Reconstitution	Dissolve the lyophilized protein in distilled water. Please refer to the Certificate of Analysis for detailed instructions.
Storage	-20 to -80°C for 12 months as supplied from date of receipt. -80°C for 3 months after reconstitution. Recommend to aliquot the protein into smaller quantities for optimal storage. Please minimize freeze-thaw cycles.

## Background

Thymic Stromal Lymphopoietin (TSLP) was originally identified as an activity from the conditioned medium of a mouse thymic stromal cell line that promoted the development of B cells. Cytokine that induces the release of T-cell-attracting chemokines from monocytes and, in particular, enhances the maturation of CD11c dendritic cells. Can induce allergic inflammation by directly activating mast cells.

## Assay Data

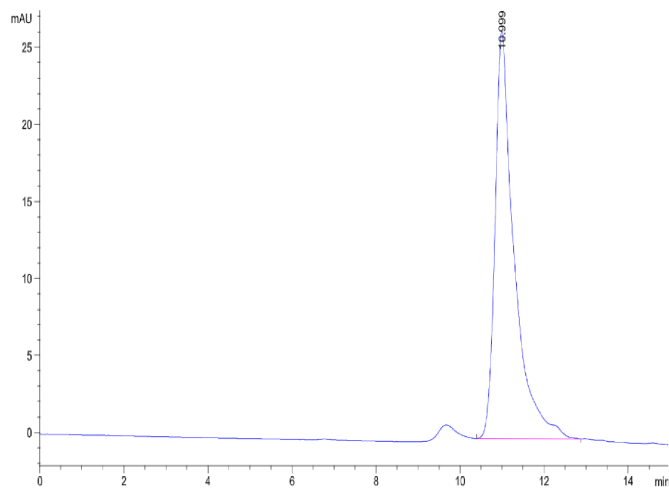
### Bis-Tris PAGE



Cynomolgus TSLP on Bis-Tris PAGE under reduced condition. The purity is greater than 95%.

### SEC-HPLC

Assay Data

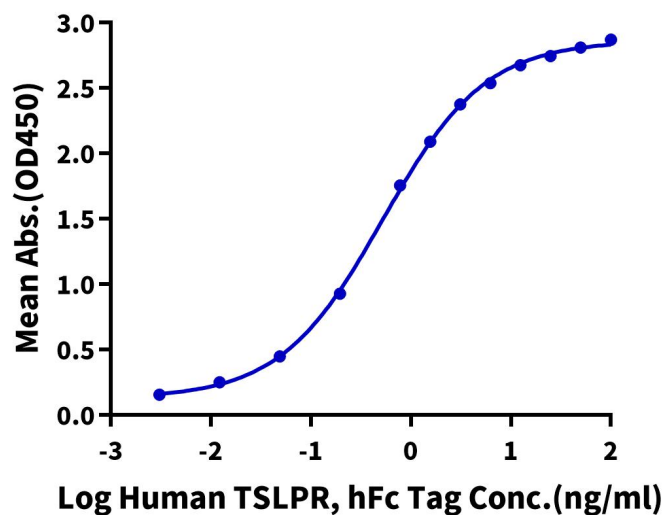


The purity of Cynomolgus TSLP is greater than 90% as determined by SEC-HPLC.

ELISA Data

**Cynomolgus TSLP, His Tag ELISA**

0.1µg Cynomolgus TSLP, His Tag Per Well

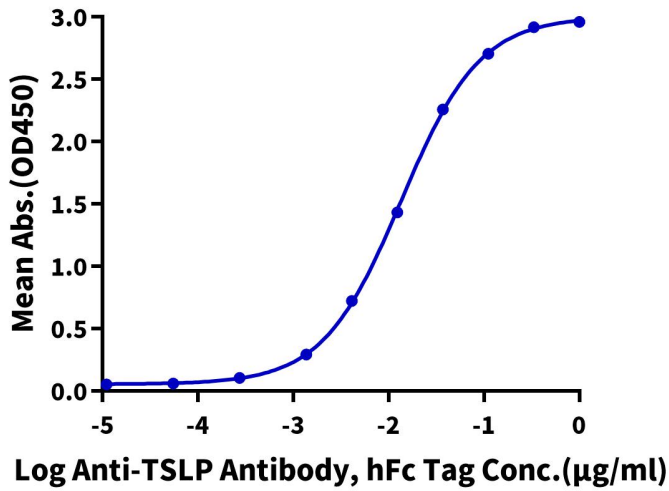


Immobilized Cynomolgus TSLP, His Tag at 1µg/ml (100µl/well) on the plate. Dose response curve for Human TSLPR, hFc Tag with the EC50 of 0.52ng/ml determined by ELISA.

Assay Data

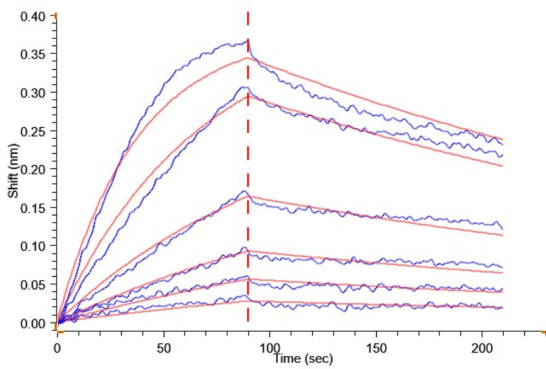
**Cynomolgus TSLP, His Tag ELISA**

0.1µg Cynomolgus TSLP, His Tag Per Well

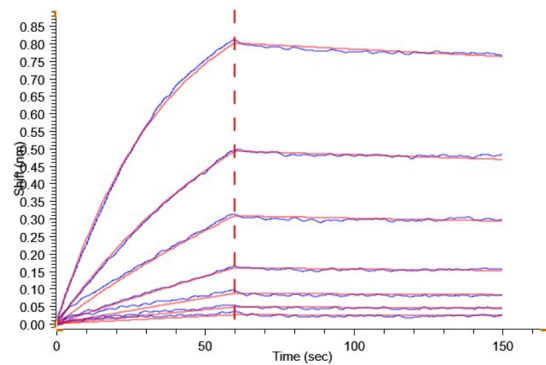


Immobilized Cynomolgus TSLP, His Tag at 1µg/ml (100µl/Well) on the plate. Dose response curve for Anti-TSLP Antibody, hFc Tag with the EC50 of 13.6ng/ml determined by ELISA.

BLI Data



Loaded Human TSLPR, hFc Tag on ProA-Biosensor can bind Cynomolgus TSLP, His Tag with an affinity constant of 6.58 nM as determined in BLI assay.



Loaded Anti-TSLP Antibody, hFc Tag on ProA-Biosensor can bind Cynomolgus TSLP, His Tag with an affinity constant of 2.02 nM as determined in BLI assay.