

Human TSLP Protein

Cat. No. TSP-HM201



Description

Source	Recombinant Human TSLP Protein is expressed from HEK293 with hFc tag at the C-Terminus. It contains Tyr29-Gln159.
Accession	Q969D9-1
Molecular Weight	The protein has a predicted MW of 41.69 kDa. Due to glycosylation, the protein migrates to 38-42 kDa based on Tris-Bis PAGE result.
Endotoxin	Less than 1EU per µg by the LAL method.
Purity	> 95% as determined by Tris-Bis PAGE > 95% as determined by HPLC

Formulation and Storage

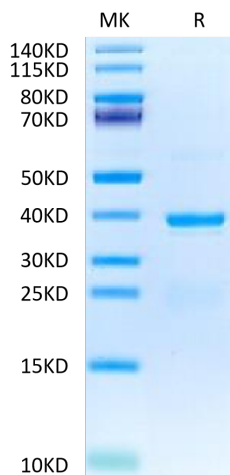
Formulation	Lyophilized from 0.22 µm filtered solution in PBS (pH 7.4). Normally 8% trehalose is added as protectant before lyophilization.
Reconstitution	Centrifuge the tube before opening. Reconstituting to a concentration more than 100 µg/ml is recommended. Dissolve the lyophilized protein in distilled water.
Storage	-20 to -80°C for 12 months as supplied from date of receipt. -20 to -80°C for 3-6 months in unopened state after reconstitution. 2-8°C for 2-7 days after reconstitution. Recommend to aliquot the protein into smaller quantities for optimal storage. Please minimize freeze-thaw cycles.

Background

Thymic Stromal Lymphopoietin (TSLP) was originally identified as an activity from the conditioned medium of a mouse thymic stromal cell line that promoted the development of B cells. Cytokine that induces the release of T-cell-attracting chemokines from monocytes and, in particular, enhances the maturation of CD11c dendritic cells. Can induce allergic inflammation by directly activating mast cells.

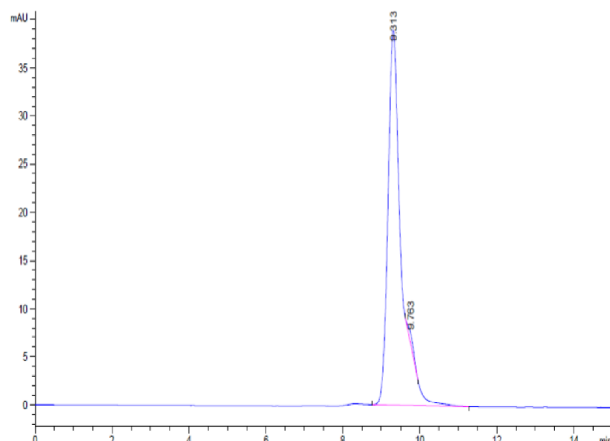
Assay Data

Tris-Bis PAGE



Human TSLP on Tris-Bis PAGE under reduced condition. The purity is greater than 95%.

SEC-HPLC



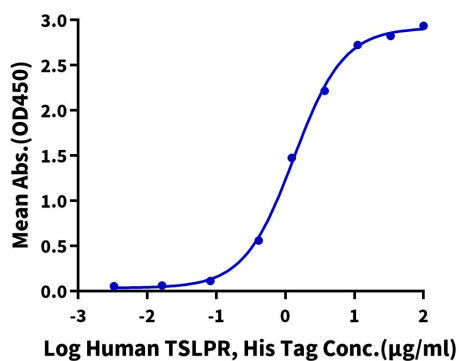
The purity of Human TSLP is greater than 95% as determined by SEC-HPLC.

Assay Data

ELISA Data

Human TSLP, hFc Tag ELISA

0.1µg Human TSLP, hFc Tag Per Well

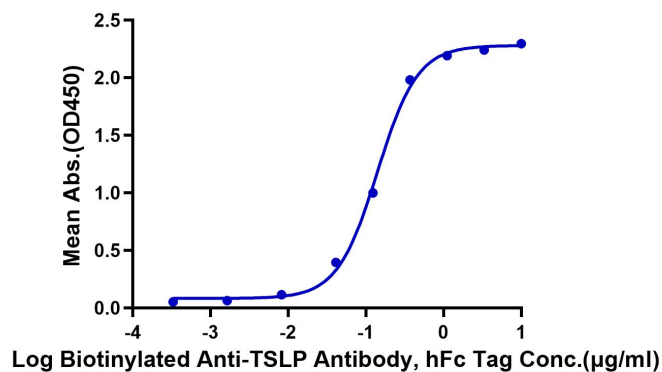


Immobilized Human TSLP, hFc Tag at 1µg/ml (100µl/well) on the plate. Dose response curve for Human TSLPR, His Tag with the EC50 of 1.33µg/ml determined by ELISA (QC Test).

ELISA Data

Human TSLP, hFc Tag ELISA

0.05µg Human TSLP, hFc Tag Per Well



Immobilized Human TSLP, hFc Tag at 0.5µg/ml (100µl/Well) on the plate. Dose response curve for Biotinylated Anti-TSLP Antibody, hFc Tag with the EC50 of 0.14µg/ml determined by ELISA.