

Human TSLP (R127A, R130A) Protein

Cat. No. TSP-HM202



Description

Source	Recombinant Human TSLP (R127A, R130A) Protein is expressed from HEK293 with His tag at the C-terminus. It contains Tyr29-Gln159 (R127A, R130A).
Accession	Q969D9-1
Molecular Weight	The protein has a predicted MW of 16.37 kDa. Due to glycosylation, the protein migrates to 28-38 kDa based on Bis-Tris PAGE result.
Endotoxin	Less than 0.1 EU per µg by the LAL method.
Purity	> 95% as determined by Bis-Tris PAGE > 95% as determined by HPLC

Formulation and Storage

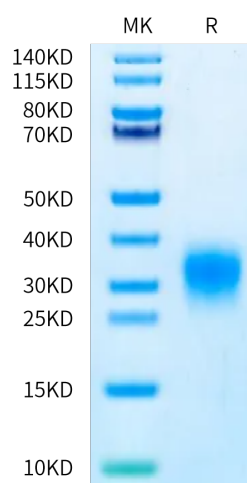
Formulation	Lyophilized from 0.22 µm filtered solution in PBS (pH 7.4). Normally 8% trehalose is added as protectant before lyophilization.
Reconstitution	Dissolve the lyophilized protein in distilled water. Please refer to the Certificate of Analysis for detailed instructions.
Storage	-20 to -80°C for 12 months as supplied from date of receipt. -80°C for 3 months after reconstitution. Recommend to aliquot the protein into smaller quantities for optimal storage. Please minimize freeze-thaw cycles.

Background

Thymic Stromal Lymphopoietin (TSLP) was originally identified as an activity from the conditioned medium of a mouse thymic stromal cell line that promoted the development of B cells. Cytokine that induces the release of T-cell-attracting chemokines from monocytes and, in particular, enhances the maturation of CD11c dendritic cells. Can induce allergic inflammation by directly activating mast cells.

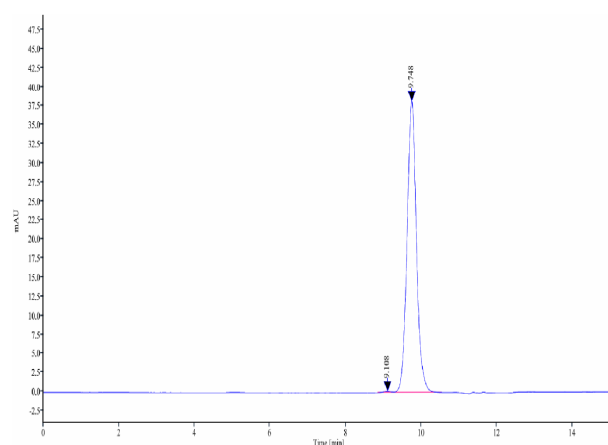
Assay Data

Bis-Tris PAGE



Human TSLP (R127A, R130A) on Bis-Tris PAGE under reduced condition. The purity is greater than 95%.

SEC-HPLC



The purity of Human TSLP (R127A, R130A) is greater than 95% as determined by SEC-HPLC.

Human TSLP (R127A, R130A) Protein

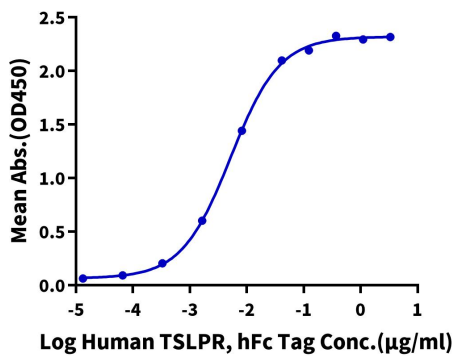
Cat. No. TSP-HM202



Assay Data

ELISA Data

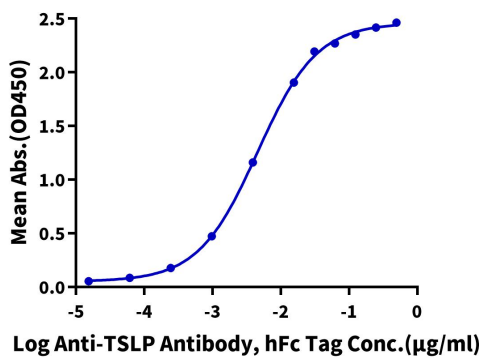
Human TSLP (R127A, R130A), His Tag ELISA
0.1µg Human TSLP (R127A, R130A), His Tag Per Well



Immobilized Human TSLP (R127A, R130A), His Tag at 1µg/ml (100µl/well) on the plate. Dose response curve for Human TSLPR, hFc Tag with the EC50 of 5.2ng/ml determined by ELISA.

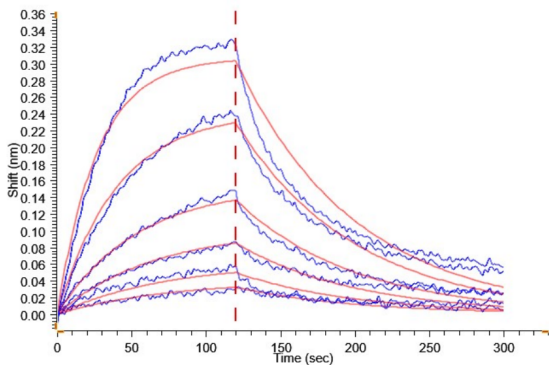
ELISA Data

Human TSLP (R127A, R130A), His Tag ELISA
0.05µg Human TSLP (R127A, R130A), His Tag Per Well



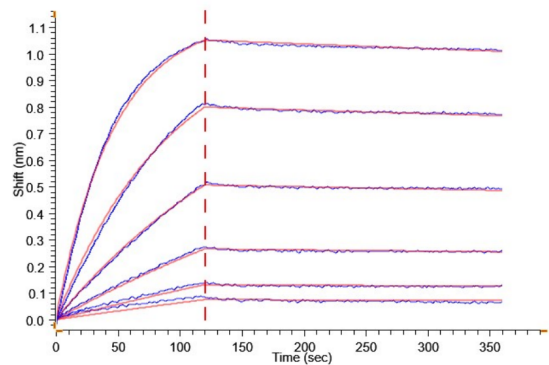
Immobilized Human TSLP (R127A, R130A), His Tag at 0.5µg/ml (100µl/well) on the plate. Dose response curve for Anti-TSLP Antibody, hFc Tag with the EC50 of 4.6ng/ml determined by ELISA.

BLI Data



Loaded Human TSLPR, hFc Tag on ProA-Biosensor can bind Human TSLP (R127A, R130A), His Tag with an affinity constant of 12.70 nM as determined in BLI assay (Gator® Prime).

BLI Data



Loaded Anti-TSLP Antibody, hFc Tag on ProA-Biosensor can bind Human TSLP (R127A, R130A), His Tag with an affinity constant of 0.41 nM as determined in BLI assay (Gator® Prime).