

Human TSLP Protein, Ultra Low Endotoxin



Cat. No. TSP-HM401-UL

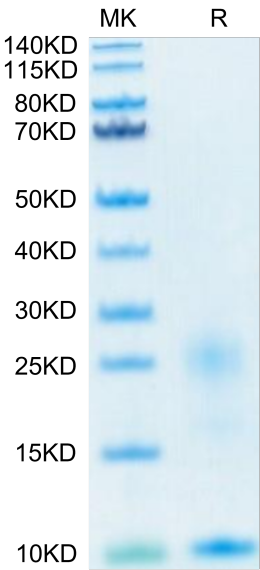
Description	
Source	Recombinant Human TSLP Protein is expressed from HEK293 with His tag and Avi tag at the C-Terminus. It contains Tyr29-Gln159.
Accession	Q969D9-1
Molecular Weight	The protein has a predicted MW of 17.8 kDa. Due to furin cleavage site, the protein migrates to 12 kDa&20-25 kDa based on Bis-Tris PAGE result.
Endotoxin	Less than 0.01 EU per µg by the LAL method.
Purity	> 95% as determined by Bis-Tris PAGE > 95% as determined by HPLC

Formulation and Storage	
Formulation	Lyophilized from 0.22µm filtered solution in PBS (pH 7.4). Normally 8% trehalose is added as protectant before lyophilization.
Reconstitution	Dissolve the lyophilized protein in distilled water. Please refer to the Certificate of Analysis for detailed instructions.
Storage	-20 to -80°C for 12 months as supplied from date of receipt.-80°C for 3 months after reconstitution.Recommend to aliquot the protein into smaller quantities for optimal storage. Please minimize freeze-thaw cycles.

Background	
Thymic Stromal Lymphopoietin (TSLP) was originally identified as an activity from the conditioned medium of a mouse thymic stromal cell line that promoted the development of B cells. Cytokine that induces the release of T-cell-attracting chemokines from monocytes and, in particular, enhances the maturation of CD11c dendritic cells. Can induce allergic inflammation by directly activating mast cells.	

Assay Data

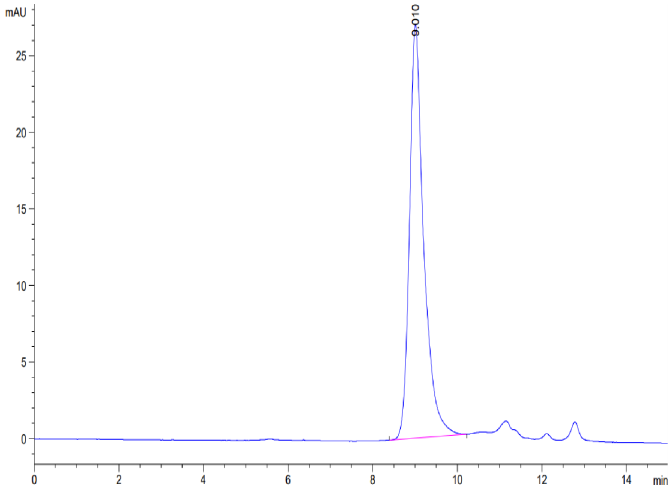
Bis-Tris PAGE



Human TSLP on Bis-Tris PAGE under reduced condition. The purity is greater than 95%.

SEC-HPLC

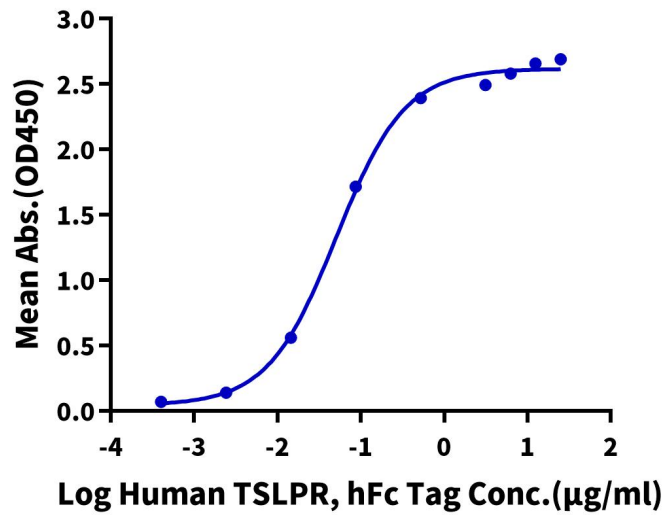
Assay Data



The purity of Human TSLP is greater than 95% as determined by SEC-HPLC.

ELISA Data

**Human TSLP, His Tag ELISA**  
0.5µg Human TSLP, His Tag Per Well



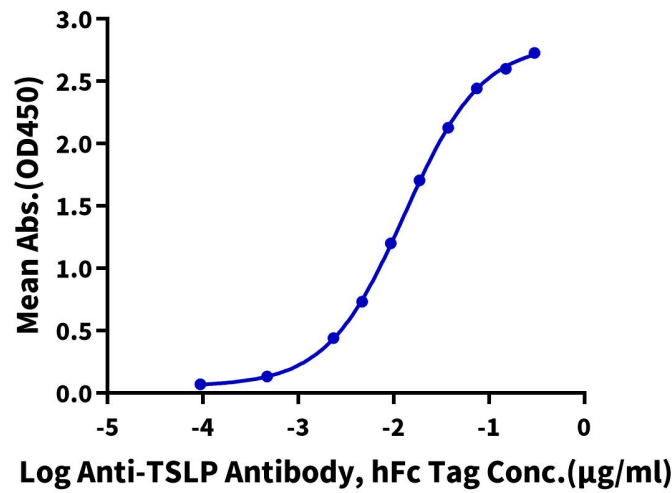
Immobilized Human TSLP, His Tag at 5µg/ml (100µl/well) on the plate. Dose response curve for Human TSLPR, hFc Tag with the EC50 of 50.8ng/ml determined by ELISA (QC Test).

ELISA Data

Assay Data

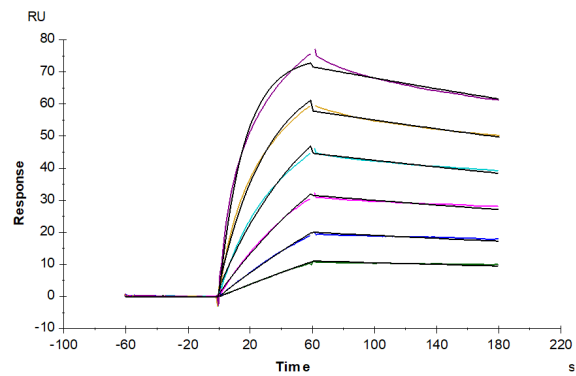
Human TSLP, His Tag ELISA

0.1µg Human TSLP, His Tag Per Well



Immobilized Human TSLP, His Tag at 1µg/ml (100µl/well) on the plate. Dose response curve for Anti-TSLP Antibody, hFc Tag with the EC50 of 13.0ng/ml determined by ELISA.

SPR Data



Human TSLP, His Tag captured on CM5 Chip via Anti-His Antibody can bind Human TSLPR, hFc Tag with an affinity constant of 1.04 nM as determined in SPR assay (Biacore T200).