

Human VEGF R3/FLT4 Protein



Cat. No. VGF-HM2R3

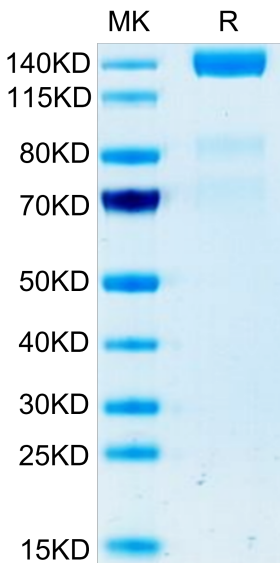
Description	
Source	Recombinant Human VEGF R3/FLT4 Protein is expressed from HEK293 with hFc tag at the C-Terminus. It contains Tyr25-Ile776.
Accession	P35916-1
Molecular Weight	The protein has a predicted MW of 111.3 kDa. Due to glycosylation, the protein migrates to 135-155 kDa based on Bis-Tris PAGE result.
Endotoxin	Less than 1 EU per ug by the LAL method.
Purity	> 95% as determined by Bis-Tris PAGE > 95% as determined by HPLC

Formulation and Storage	
Formulation	Lyophilized from 0.22µm filtered solution in 50mM Tris, 150mM NaCl, 100mM Glycine (pH 7.5). Normally 8% trehalose is added as protectant before lyophilization.
Reconstitution	Dissolve the lyophilized protein in distilled water. Please refer to the Certificate of Analysis for detailed instructions.
Storage	-20 to -80°C for 12 months as supplied from date of receipt. -80°C for 3 months after reconstitution. Recommend to aliquot the protein into smaller quantities for optimal storage. Please minimize freeze-thaw cycles.

Background	
Vascular endothelial growth factor (VEGF) and its receptors VEGF-R1, -R2 and -R3 play important roles in tumor angiogenesis and are associated with poor prognosis in several solid tumors. VEGF-R1, -R2 and -R3 were highly expressed in CRC cells and stromal vessels. VEGF-R1 strong positive staining correlated with shorter survival after CRC surgery.	

Assay Data

Bis-Tris PAGE



Human VEGF R3 on Bis-Tris PAGE under reduced condition. The purity is greater than 95%.

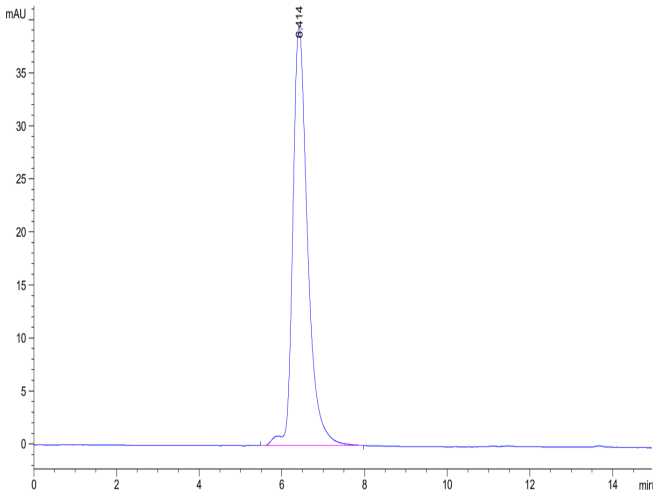
SEC-HPLC

Human VEGF R3/FLT4 Protein

Cat. No. VGF-HM2R3



Assay Data

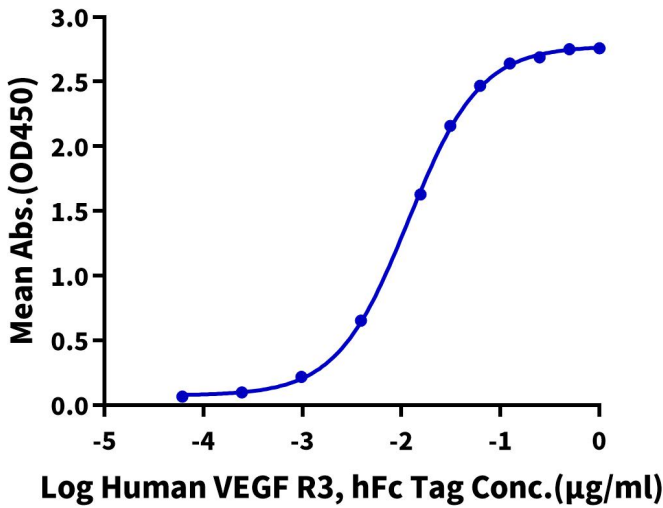


The purity of Human VEGF R3 is greater than 95% as determined by SEC-HPLC.

ELISA Data

Human VEGF R3, hFc Tag ELISA

0.1µg Human VEGF-C, His Tag Per Well

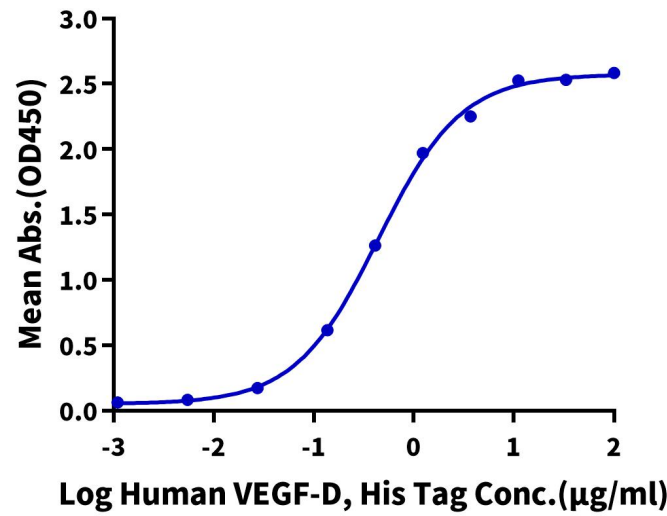


Immobilized Human VEGF-C, His Tag at 1µg/ml (100µl/well) on the plate. Dose response curve for Human VEGF R3, hFc Tag with the EC50 of 11.7ng/ml determined by ELISA (QC Test).

ELISA Data

Human VEGF R3, hFc Tag ELISA

0.2µg Human VEGF R3, hFc Tag Per Well



Immobilized Human VEGF R3, hFc Tag at 2µg/ml (100µl/well) on the plate. Dose response curve for Human VEGF-D, His Tag with the EC50 of 0.44µg/ml determined by ELISA.