

## Mouse WISP1 Protein

Cat. No. WIP-MM101

### Description

<b>Source</b>	Recombinant Mouse WISP1 Protein is expressed from HEK293 with His tag at the C-Terminus. It contains Thr23-Asn367.
<b>Accession</b>	O54775
<b>Molecular Weight</b>	The protein has a predicted MW of 39.4 kDa. Due to glycosylation, the protein migrates to 64-68 kDa based on Bis-Tris PAGE result.
<b>Endotoxin</b>	Less than 1EU per $\mu\text{g}$ by the LAL method.
<b>Purity</b>	> 95% as determined by Bis-Tris PAGE

### Formulation and Storage

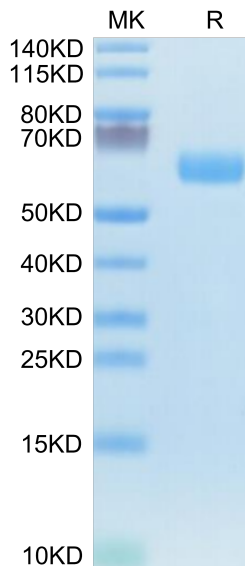
<b>Formulation</b>	Lyophilized from 0.22 $\mu\text{m}$ filtered solution in PBS (pH 7.4). Normally 8% trehalose is added as protectant before lyophilization.
<b>Reconstitution</b>	Centrifuge the tube before opening. Reconstituting to a concentration more than 100 $\mu\text{g}/\text{ml}$ is recommended. Dissolve the lyophilized protein in distilled water.
<b>Storage</b>	-20 to -80°C for 12 months as supplied from date of receipt. -80°C for 3-6 months after reconstitution. 2-8°C for 2-7 days after reconstitution. Recommend to aliquot the protein into smaller quantities for optimal storage. Please minimize freeze-thaw cycles.

### Background

The interplay between glioma stem cells (GSCs) and the tumor microenvironment plays crucial roles in promoting malignant growth of glioblastoma (GBM), the most lethal brain tumor. WISP1 is preferentially expressed and secreted by GSCs. Silencing WISP1 markedly disrupts GSC maintenance, reduces tumor-supportive TAMs (M2), and potently inhibits GBM growth. WISP1 signals through Integrin  $\alpha\beta 1$ -Akt to maintain GSCs by an autocrine mechanism and M2 TAMs through a paracrine manner.

### Assay Data

#### Bis-Tris PAGE



Mouse WISP1 on Bis-Tris PAGE under reduced condition. The purity is greater than 95%.