

Human XPNPEP2 Protein

Cat. No. XPP-HM101



Description

Source	Recombinant Human XPNPEP2 Protein is expressed from HEK293 with His tag at the C-Terminus. It contains His22-Ala649.
Accession	O43895
Molecular Weight	The protein has a predicted MW of 71.83 kDa. Due to glycosylation, the protein migrates to 73-83 kDa based on Tris-Bis PAGE result.
Endotoxin	Less than 1EU per µg by the LAL method.
Purity	> 95% as determined by Tris-Bis PAGE > 95% as determined by HPLC

Formulation and Storage

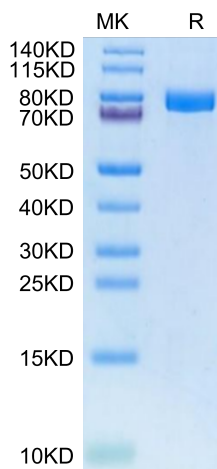
Formulation	Lyophilized from 0.22µm filtered solution in PBS (pH 7.4). Normally 8% trehalose is added as protectant before lyophilization.
Reconstitution	Centrifuge the tube before opening. Reconstituting to a concentration more than 100 µg/ml is recommended. Dissolve the lyophilized protein in distilled water.
Storage	-20 to -80°C for 12 months as supplied from date of receipt. -80°C for 3-6 months after reconstitution. 2-8°C for 2-7 days after reconstitution. Recommend to aliquot the protein into smaller quantities for optimal storage. Please minimize freeze-thaw cycles.

Background

Aminopeptidase P2 (XPNPEP2) is a receptor for TMTP1 tumor-homing peptide. However, the biological and clinical significance of Aminopeptidase P2 in human cancers remains unknown.

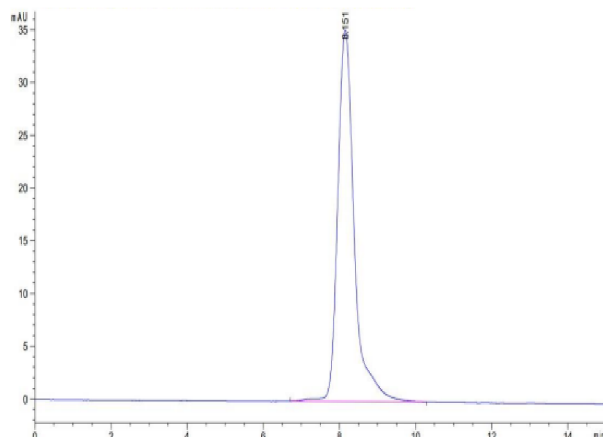
Assay Data

Tris-Bis PAGE



Human XPNPEP2 on Tris-Bis PAGE under reduced condition. The purity is greater than 95%.

SEC-HPLC



The purity of Human XPNPEP2 is greater than 95% as determined by SEC-HPLC.

Human XPNPEP2 Protein

Cat. No. XPP-HM101



Assay Data

Bioactivity Data

Measured by its ability to cleave the fluorogenic peptide substrate, H-Lys(2-Aminobenzoyl)-Pro-Pro-p-Nitroanilide (K(Abz)PP-pNA). The specific activity is > 300 pmol/min/μg.