

Mouse XPNPEP2 Protein

Cat. No. XPP-MM101

Description

Source	Recombinant Mouse XPNPEP2 Protein is expressed from HEK293 with His tag at the C-Terminus. It contains Pro23-Ala650.
Accession	B1AVD1
Molecular Weight	The protein has a predicted MW of 72.24 kDa. Due to glycosylation, the protein migrates to 75-105 kDa based on Bis-Tris PAGE result.
Endotoxin	Less than 1EU per μg by the LAL method.
Purity	> 95% as determined by Bis-Tris PAGE > 95% as determined by HPLC

Formulation and Storage

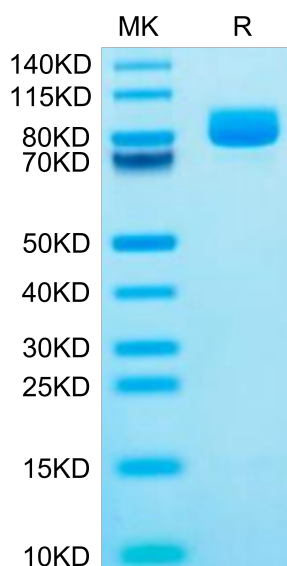
Formulation	Supplied as 0.22 μm filtered solution in PBS (pH 7.4).
Storage	Valid for 12 months from date of receipt when stored at -80°C . Recommend to aliquot the protein into smaller quantities for optimal storage. Please minimize freeze-thaw cycles.

Background

Aminopeptidase P2 (XPNPEP2) is a receptor for TMTP1 tumor-homing peptide. However, the biological and clinical significance of Aminopeptidase P2 in human cancers remains unknown.

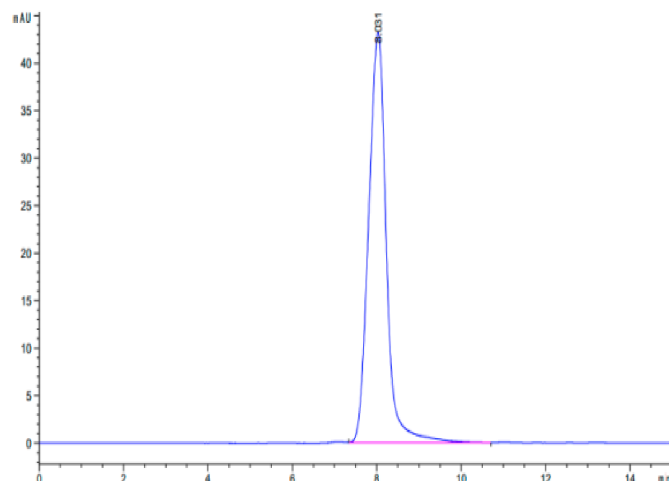
Assay Data

Bis-Tris PAGE



Mouse XPNPEP2 on Bis-Tris PAGE under reduced condition. The purity is greater than 95%.

SEC-HPLC



The purity of Mouse XPNPEP2 is greater than 95% as determined by SEC-HPLC.

Bioactivity Data

Mouse XPNPEP2 Protein

Cat. No. XPP-MM101



Assay Data

Measured by its ability to cleave the fluorogenic peptide substrate, H-Lys(2-Aminobenzoyl)-Pro-Pro-p-Nitroanilide (K(Abz)PP-pNA). The specific activity is > 175 pmol/min/μg.