

Human YKL-40/CHI3L1 Protein

Cat. No. YKL-HM140

Description

Source	Recombinant Human YKL-40/CHI3L1 Protein is expressed from Expi293 with His tag at the C-terminal. It contains Tyr22-Thr383.
Accession	P36222
Molecular Weight	The protein has a predicted MW of 41.6 kDa. Due to glycosylation, the protein migrates to 42-50 kDa based on Tris-Bis PAGE result.
Endotoxin	Less than 1EU per μ g by the LAL method.
Purity	> 95% as determined by Tris-Bis PAGE > 95% as determined by HPLC

Formulation and Storage

Formulation	Supplied as 0.22 μ m filtered solution in PBS (pH 7.4). Please dilute to the desired concentration according to the concentration of the solution shown on the product label.
Storage	Valid for 12 months from date of receipt when stored at -80°C. Recommend to aliquot the protein into smaller quantities for optimal storage. Please do not repeated freeze-thaw cycles.

Background

YKL-40 (also known as Chitinase 3-like 1) is a glycoprotein produced by inflammatory, cancer and stem cells. Its physiological role is not completely understood but YKL-40 is elevated in the brain and cerebrospinal fluid (CSF) in several neurological and neurodegenerative diseases associated with inflammatory processes. Yet the precise characterization of YKL-40 in dementia cases is missing. YKL-40 is a disease-specific marker of neuroinflammation showing its highest levels in prion diseases. Therefore, YKL-40 quantification might have a potential for application in the evaluation of therapeutic intervention in dementias with a neuroinflammatory component.

Assay Data

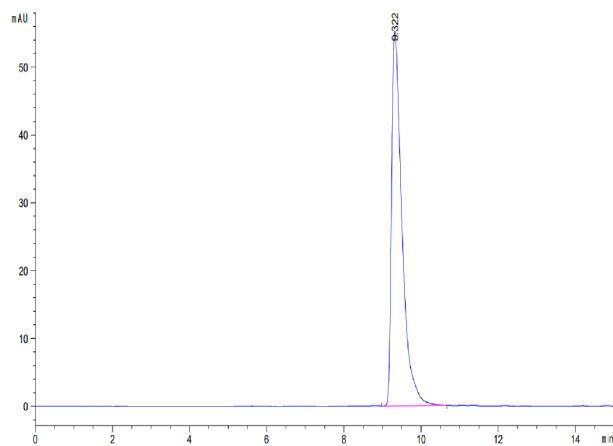
Tris-Bis PAGE



Human YKL-40/CHI3L1 on Tris-Bis PAGE under reduced condition. The purity is greater than 95%.

SEC-HPLC

Assay Data



The purity of Human YKL-40/CHI3L1 is greater than 95% as determined by SEC-HPLC.