

Chimeric HLA-A*02:01 (α3) &mB2M&WT-1 (RMFPNAPYL) Monomer Protein



Cat. No. MHC-HM449

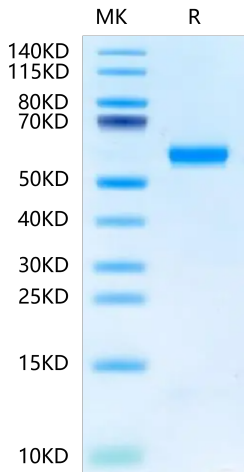
| Description | |
|------------------|---|
| Source | Recombinant Chimeric HLA-A*02:01(α3)&mB2M&WT-1 (RMFPNAPYL) Monomer Protein is expressed from HEK293 with His tag at the C-Terminus. It contains Gly25-Thr206(Human HLA-A*02:01 α1&α2) & Asp207-Glu299(Mouse H-2Ld α3), Ile21-Met119(mB2M) and RMFPNAPYL peptide. |
| Accession | A0A140T933(Human HLA-A*02:01 α1&α2)&P01897(Mouse H-2Ld α3)&P01887(Mouse B2M) |
| Molecular Weight | The protein has a predicted MW of 48.10 kDa. Due to glycosylation, the protein migrates to 55-65 kDa based on Tris-Bis PAGE result. |
| Endotoxin | Less than 1EU per µg by the LAL method. |
| Purity | > 95% as determined by Tris-Bis PAGE > 95% as determined by HPLC |

| Formulation and Storage | |
|-------------------------|--|
| Formulation | Lyophilized from 0.22µm filtered solution in PBS (pH 7.4). Normally 8% trehalose is added as protectant before lyophilization. |
| Reconstitution | Centrifuge the tube before opening. Reconstituting to a concentration more than 100 µg/ml is recommended. Dissolve the lyophilized protein in distilled water. |
| Storage | -20 to -80°C for 12 months as supplied from date of receipt.-20 to -80°C for 3-6 months in unopened state after reconstitution.2-8°C for 2-7 days after reconstitution.Recommend to aliquot the protein into smaller quantities for optimal storage. Please minimize freeze-thaw cycles. |

| Background | |
|---|--|
| The WT1 protein plays a role in cell growth, the process by which cells mature to perform specific functions (differentiation), and the self-destruction of cells (apoptosis). WT1 is differentially expressed in serous, endometrioid, clear cell, and mucinous carcinomas of the peritoneum, fallopian tube, ovary, and endometrium.The Human HLA-A*0201 WT-1 (RMFPNAPYL) complex Protein is a complex of HLA-A*0201 of the MHC Class I, B2M and RMFPNAPYL peptide of the WT-1. | |

Assay Data

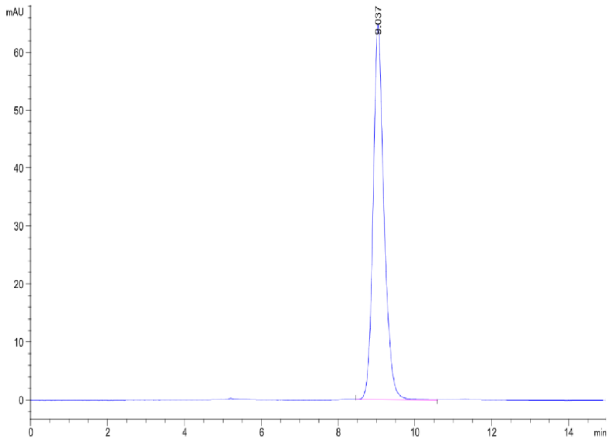
Tris-Bis PAGE



Chimeric HLA-A*02:01 (α3) &mB2M&WT-1 (RMFPNAPYL) Monomer on Tris-Bis PAGE under reduced condition. The purity is greater than 95%.

SEC-HPLC

Assay Data



The purity of Chimeric HLA-A*02:01 (mα3) &mB2M&WT-1 (RMFPNAPYL) Monomer is greater than 95% as determined by SEC-HPLC.